

For Research Use Only

Anti-Biotin Rabbit Recombinant Antibody

Catalog Number: 98598-1-RR



Basic Information

Catalog Number:

98598-1-RR

Size:

100ug, 1000 µg/ml

Source:

Rabbit

Isotype:

IgG

GenBank Accession Number:

GeneID (NCBI):

Full Name:

Purification Method:

Protein A purification

CloneNo.:

242355B1

Recommended Dilutions:

FC: 0.25 ug per 10⁶ cells in a 100 µl suspension

Applications

Tested Applications:

FC

Species Specificity:

n/a

Positive Controls:

FC : human PBMCs, mouse splenocytes

Background Information

Biotin, also called vitamin H or vitamin B7, is a water-soluble vitamin required by all organisms (PMID: 12055344). It serves as a necessary cofactor for enzymes involved in carboxylation reactions essential for gluconeogenesis, lipid metabolism, and amino acid catabolism (PMID: 38825069). Biotin is often used to label proteins and nucleic acids. This anti-biotin antibody can be used for detecting biotinylated molecules.

Storage

Storage:

Store at 2 - 8°C. Stable for one year after shipment.

Storage Buffer:

PBS with 0.09% sodium azide, pH7.3

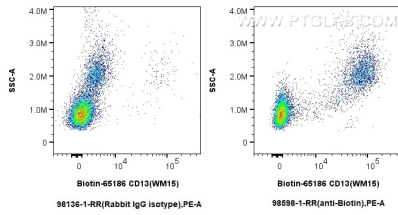
For technical support and original validation data for this product please contact:

T: 1 (888) 4PTGLAB (1-888-478-4522) (toll free in USA), or 1(312) 455-8498 (outside USA)

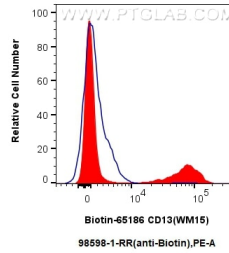
E: proteintech@ptglab.com
W: ptglab.com

This product is exclusively available under Proteintech Group brand and is not available to purchase from any other manufacturer.

Selected Validation Data



1x10⁶ human PBMCs were surface stained with Biotin Anti-Human CD13 (WM15) (Biotin-65186, Clone: WM15), and then stained with 0.25 ug Anti-Biotin Rabbit RecAb (98598-1-RR, Clone: 242355B1) or Rabbit IgG Isotype Control RecAb (98136-1-RR, Clone: 240953C9), and PE-conjugated Goat Anti-Rabbit IgG. Cells were incubated with FC Receptor Block prior to staining. Cells were not fixed.



1x10⁶ human PBMCs were surface stained with Biotin Anti-Human CD13 (WM15) (Biotin-65186, Clone: WM15) and then stained with 0.25 ug Anti-Biotin Rabbit RecAb (98598-1-RR, Clone:242355B1) (red) or Rabbit IgG Isotype Control RecAb (98136-1-RR, Clone: 240953C9) (blue) and PE-conjugated Goat Anti-Rabbit IgG. Cells were incubated with FC Receptor Block prior to staining. Cells were not fixed.