

For Research Use Only

Anti-Human LILRA2/CD85h Rabbit Recombinant Antibody

Catalog Number: 98607-1-RR



Basic Information

Catalog Number:

98607-1-RR

Size:

100ug , 1000 µg/ml

Source:

Rabbit

Isotype:

IgG

Immunogen Catalog Number:

EG1746

GenBank Accession Number:

NM_001130917.3

GeneID (NCBI):

11027

UNIPROT ID:

Q8N149-1

Full Name:

Leukocyte immunoglobulin-like receptor, subfamily A (with TM domain), member 2

Calculated MW:

53kDa

Purification Method:

Protein A purification

CloneNo.:

250334G1

Recommended Dilutions:

FC: 0.25 ug per 10⁶ cells in a 100 µl suspension

Applications

Tested Applications:

FC

Species Specificity:

human

Positive Controls:

FC : FC receptor blocked human peripheral blood

leukocytes,

Background Information

LILRA2 (Leukocyte Immunoglobulin-Like Receptor A2) is a specialized cell surface receptor primarily expressed on innate immune cells. It functions as a sensor for specific microbial products and plays a complex role in regulating immune responses. LILRA2 selectively modulates LPS-mediated responses in monocytes, enhancing production of specific pro-inflammatory cytokines while inhibiting phagocytosis (PMID 22479404).

Storage

Storage:

Store at 2 - 8°C. Stable for one year after shipment.

Storage Buffer:

PBS with 0.09% sodium azide, pH7.3

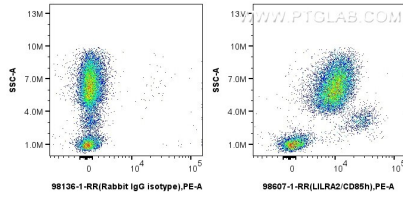
For technical support and original validation data for this product please contact:

T: 1 (888) 4PTGLAB (1-888-478-4522) (toll free in USA), or 1(312) 455-8498 (outside USA)

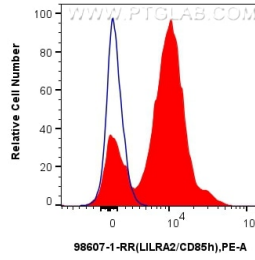
E: proteintech@ptglab.com
W: ptglab.com

This product is exclusively available under Proteintech Group brand and is not available to purchase from any other manufacturer.

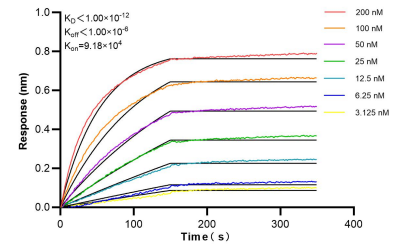
Selected Validation Data



1x10⁶ human peripheral blood leukocytes were surface stained with 0.25 ug Anti-Human LILRA2/CD85h Rabbit RecAb (98607-1-RR, Clone:250334G1) or Rabbit IgG Isotype Control RecAb (98136-1-RR, Clone: 240953C9) and PE-Conjugated Goat Anti-Rabbit IgG(H+L). Cells were incubated with FC Receptor Block prior to staining. Cells were not fixed.



1x10⁶ human peripheral blood leukocytes were surface stained with 0.25 ug Anti-Human LILRA2/CD85h Rabbit RecAb (98607-1-RR, Clone:250334G1)(red) or Rabbit IgG Isotype Control RecAb (98136-1-RR, Clone: 240953C9)(blue) and PE-Conjugated Goat Anti-Rabbit IgG(H+L). Cells were incubated with FC Receptor Block prior to staining. Cells were not fixed.



Bi-layer interferometry (BLI) kinetic assays of 98607-1-RR against Human LILRA2/CD85h were performed. The affinity constant is below 1 pM.