

For Research Use Only

# Anti-Human CD15 Rabbit Recombinant Antibody

Catalog Number: 98616-1-RR



## Basic Information

Catalog Number:

98616-1-RR

Size:

100ug, 1000 µg/ml

Source:

Rabbit

Isotype:

IgG

GenBank Accession Number:

GeneID (NCBI):

Full Name:

Purification Method:

Protein A purification

CloneNo.:

252342A1

Recommended Dilutions:

FC: 0.25 ug per 10<sup>6</sup> cells in a 100 µl suspension

## Applications

Tested Applications:

FC

Species Specificity:

human

Positive Controls:

FC : human peripheral blood leukocytes,

## Background Information

CD15, also known as stage-specific embryonic antigen-1 (SSEA-1) or Lewis X (LeX), is a cell surface glycan consisting of a trisaccharide with the structure Gal $\beta$ 1-4[Fuc $\alpha$ 1-3]GlcNAc (PMID: 18953356). CD15 is expressed on most terminally differentiated myeloid cells, including neutrophils, eosinophils, monocytes, macrophages, mast cells, and Langerhans cells. It has also been shown to be expressed on stem cells and progenitors in the embryonic and adult nervous system, Hodgkin's lymphoma cells, and cells from a variety of solid cancers (PMID: 19185848). CD15 acts as a ligand for selectins in transendothelial migration and is involved in phagocytosis and chemotaxis (PMID: 1362195).

## Storage

Storage:

Store at 2 - 8°C. Stable for one year after shipment.

Storage Buffer:

PBS with 0.09% sodium azide, pH7.3

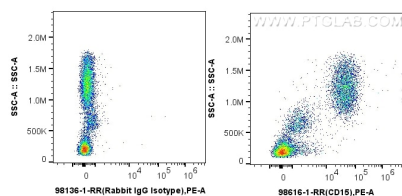
For technical support and original validation data for this product please contact:

T: 1 (888) 4PTGLAB (1-888-478-4522) (toll free in USA), or 1(312) 455-8498 (outside USA)

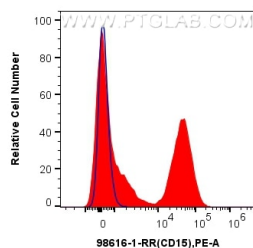
E: [proteintech@ptglab.com](mailto:proteintech@ptglab.com)  
W: [ptglab.com](http://ptglab.com)

This product is exclusively available under Proteintech Group brand and is not available to purchase from any other manufacturer.

## Selected Validation Data



1x10<sup>6</sup> human peripheral blood leukocytes were surface stained with 0.25 ug Anti-Human CD15 Rabbit RecAb (98616-1-RR, Clone: 252342A1) or 0.25 ug Rabbit IgG Isotype Control RecAb (98136-1-RR, Clone: 240953C9), and PE-Conjugated Goat Anti-Rabbit IgG(H+L). Cells were incubated with FC Receptor Block prior to staining. Cells were not fixed.



1x10<sup>6</sup> human peripheral blood leukocytes were surface stained with 0.25 ug Anti-Human CD15 Rabbit RecAb (98616-1-RR, Clone: 252342A1) (red) or 0.25 ug Rabbit IgG Isotype Control RecAb (98136-1-RR, Clone: 240953C9) (blue), and PE-Conjugated Goat Anti-Rabbit IgG(H+L). Cells were incubated with FC Receptor Block prior to staining. Cells were not fixed.