

For Research Use Only

# Anti-Sheep CD14 Rabbit Recombinant Antibody, PBS Only

Catalog Number: 98648-3-PBS



## Basic Information

<b>Catalog Number:</b> 98648-3-PBS	<b>GenBank Accession Number:</b> NM_001077209.1	<b>Purification Method:</b> Protein A purification
<b>Size:</b> 1mg, 3 mg/ml	<b>GeneID (NCBI):</b> 443216	<b>CloneNo.:</b> 251673C4
<b>Source:</b> Rabbit	<b>UNIPROT ID:</b> Q06AV9	
<b>Isotype:</b> IgG	<b>Full Name:</b> CD14 molecule	
<b>Immunogen Catalog Number:</b> EG6924	<b>Calculated MW:</b> 40 kDa	

## Applications

**Tested Applications:**  
FC

**Species Specificity:**  
sheep

## Background Information

CD14 is a 50-55 kDa glycosylphosphatidylinositol-anchored glycoprotein preferentially expressed on monocytes and macrophages, and at lower levels on granulocytes (PMID: 3385210; 2462937; 7685797). CD14 can also exist as a soluble protein. CD14 acts as a co-receptor for bacterial liposaccharides (LPS) (PMID: 1698311). It plays a major role in the inflammatory response of monocytes to LPS.

## Storage

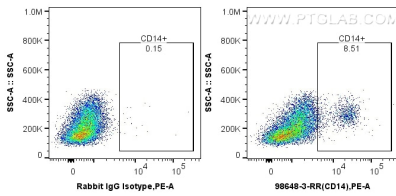
**Storage:**  
Store at -80°C.

**Storage Buffer:**  
PBS only, pH7.3

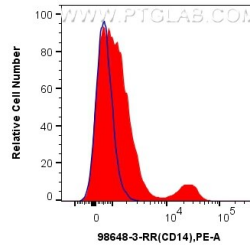
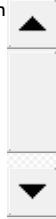
For technical support and original validation data for this product please contact:  
T: 1 (888) 4PTGLAB (1-888-478-4522) (toll free in USA), or 1(312) 455-8498 (outside USA)      E: proteintech@ptglab.com  
W: ptglab.com

This product is exclusively available under Proteintech Group brand and is not available to purchase from any other manufacturer.

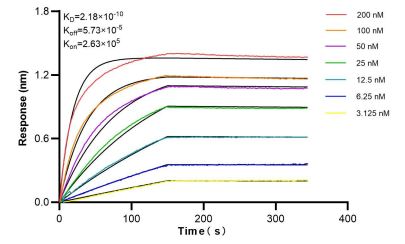
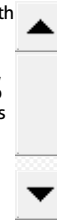
## Selected Validation Data



1x10<sup>6</sup> sheep PBMCs cells were stained with 0.25 ug Anti-Sheep CD14 Rabbit RecAb (98648-3-RR, Clone:251673C4), or 0.25 ug Rabbit IgG Isotype Control RecAb (98136-1-RR, Clone: 240953C9) and PE-Conjugated Goat Anti-Rabbit IgG(H+L). Cells were fixed and permeabilized with Intracellular Flow Cytometry Fixation & Permeabilization Buffer Kit (PF00019). This data was developed using the same antibody clone with 98648-3-PBS in a different storage



1x10<sup>6</sup> sheep PBMCs cells were stained with 0.25 ug Anti-Sheep CD14 Rabbit RecAb (98648-3-RR, Clone:251673C4) and PE-Conjugated Goat Anti-Rabbit IgG(H+L)(red), or 0.25 ug Rabbit IgG Isotype Control RecAb (98136-1-RR, Clone: 240953C9) (blue). Cells were fixed and permeabilized with Intracellular Flow Cytometry Fixation & Permeabilization Buffer Kit (PF00019). This data was developed using the same antibody clone with 98648-3-PBS in a



Biolayer interferometry (BLI) kinetic assays of 98648-3-RR against sheep CD14 were performed. The affinity constant is 0.218 nM.