

For Research Use Only

Anti-Human Glycophorin B/CD235b Rabbit Recombinant Antibody

Catalog Number: 98663-1-RR



Basic Information

Catalog Number:

98663-1-RR

Size:

100ug, 1000 µg/ml

Source:

Rabbit

Isotype:

IgG

Immunogen Catalog Number:

EG3516

GenBank Accession Number:

BC121077

GeneID (NCBI):

2994

UNIPROT ID:

P06028

Full Name:

glycophorin B (MNS blood group)

Purification Method:

Protein A purification

CloneNo.:

250515H8

Recommended Dilutions:

FC: 0.25 ug per 10⁶ cells in a 100 µl suspension

Applications

Tested Applications:

FC

Species Specificity:

human

Positive Controls:

FC : Human peripheral blood erythrocytes,

Background Information

Glycophorin B/CD235b (GYPB) is a single-pass transmembrane sialoglycoprotein expressed on the surface of human red blood cells (RBCs). Glycophorin B/CD235b is primarily known for determining the Ss blood group and playing a role in malaria susceptibility. It is encoded by the GYPB gene and is structurally similar to glycophorin A (GPA), though present at lower abundance.

Storage

Storage:

Store at 2 - 8°C. Stable for one year after shipment.

Storage Buffer:

PBS with 0.09% sodium azide, pH7.3

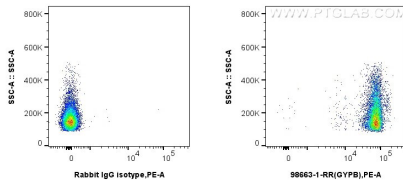
For technical support and original validation data for this product please contact:

T: 1 (888) 4PTGLAB (1-888-478-4522) (toll free in USA), or 1(312) 455-8498 (outside USA)

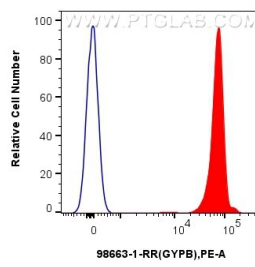
E: proteintech@ptglab.com
W: ptglab.com

This product is exclusively available under Proteintech Group brand and is not available to purchase from any other manufacturer.

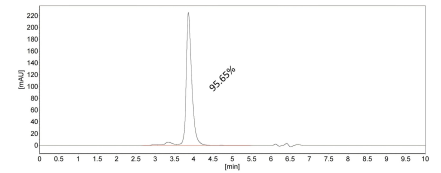
Selected Validation Data



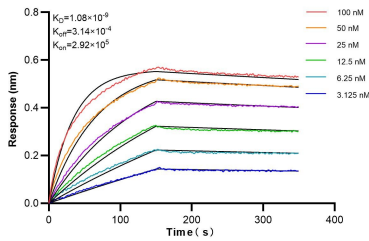
1x10⁶ human peripheral blood erythrocytes were surface stained with 0.25 ug Anti-Human Glycophorin B/CD235b Rabbit RecAb (98663-1-RR, Clone: 250515H8) or 0.25 ug Rabbit IgG Isotype Control RecAb (98136-1-RR, Clone: 240953C9), and PE-Conjugated Goat Anti-Rabbit IgG(H+L). Cells were not fixed.



1x10⁶ human peripheral blood erythrocytes were surface stained with 0.25 ug Anti-Human Glycophorin B/CD235b Rabbit RecAb (98663-1-RR, Clone: 250515H8) (red) or 0.25 ug Rabbit IgG Isotype Control RecAb (98136-1-RR, Clone: 240953C9) (blue), and PE-Conjugated Goat Anti-Rabbit IgG(H+L). Cells were not fixed.



The purity of Human Glycophorin B/CD235b Recombinant monoclonal antibody (Cat. No. 98663-1-RR) was greater than 95% as determined by SEC-HPLC.



Biolayer interferometry (BLI) kinetic assays of 98663-1-RR against Human Glycophorin B/CD235b were performed. The affinity constant is 1.08 nM.