

For Research Use Only

Anti-Human GPR37 Rabbit Recombinant Antibody

Catalog Number: 98665-1-RR



Basic Information

Catalog Number:

98665-1-RR

Size:

100ug, 1000 µg/ml

Source:

Rabbit

Isotype:

IgG

Immunogen Catalog Number:

EG5426

GenBank Accession Number:

NM_005302.5

GeneID (NCBI):

2861

UNIPROT ID:

O15354

Full Name:

G protein-coupled receptor 37
(endothelin receptor type B-like)

Calculated MW:

67 kDa

Purification Method:

Protein A purification

CloneNo.:

252205H8

Recommended Dilutions:

FC: 0.25 ug per 10⁶ cells in a 100 µl suspension

Applications

Tested Applications:

FC

Species Specificity:

human

Positive Controls:

FC : THP-1 cells, A172 cells

Background Information

The orphan G protein-coupled receptor GPR37, also known as PAELR (parkin-associated endothelin receptor-like receptor) or ETBR-LP-1 (endothelin B receptor-like protein 1), is a 613 aa, multi-pass membrane protein predominantly expressed in the brain. It is a substrate of parkin (PARK2). When overexpressed in cells, GPR37 tends to become insoluble, unfolded, and ubiquitinated in vivo. Accumulation of the unfolded protein may lead to dopaminergic neuronal death in juvenile Parkinson disease (JPD).

Storage

Storage:

Store at 2 - 8°C. Stable for one year after shipment.

Storage Buffer:

PBS with 0.09% sodium azide, pH7.3

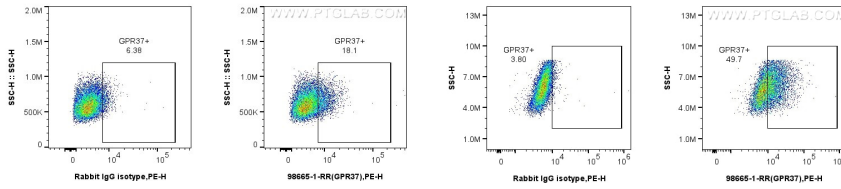
For technical support and original validation data for this product please contact:

T: 1 (888) 4PTGLAB (1-888-478-4522) (toll free in USA), or 1(312) 455-8498 (outside USA)

E: proteintech@ptglab.com
W: ptglab.com

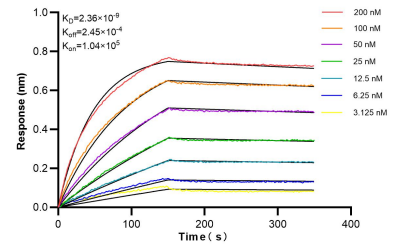
This product is exclusively available under Proteintech Group brand and is not available to purchase from any other manufacturer.

Selected Validation Data



1x10⁶ THP-1 cells were surface stained with 0.25 ug Anti-Human GPR37 Rabbit RecAb (98665-1-RR, Clone: 252205H8) or 0.25 ug Rabbit IgG Isotype Control Recombinant Antibody (98136-1-RR, Clone: 240953C9), and PE-Conjugated Goat Anti-Rabbit IgG(H+L). Cells were incubated with FC Receptor Block prior to staining. Cells were not fixed.

1x10⁶ A172 cells were surface stained with 0.25 ug Anti-Human GPR37 Rabbit RecAb (98665-1-RR, Clone: 252205H8) or 0.25 ug Rabbit IgG Isotype Control Recombinant Antibody (98136-1-RR, Clone: 240953C9), and PE-Conjugated Goat Anti-Rabbit IgG(H+L). Cells were not fixed.



Bi-layer interferometry (BLI) kinetic assays of 98665-1-RR against Human GPR37 were performed. The affinity constant is 2.36 nM.