

For Research Use Only

# Anti-Whitlow/218 Linker Rabbit Recombinant Antibody

Catalog Number: 98672-2-RR



## Basic Information

Catalog Number:

98672-2-RR

Size:

100ug, 1000 µg/ml

Source:

Rabbit

Isotype:

IgG

GenBank Accession Number:

GeneID (NCBI):

Full Name:

Purification Method:

Protein A purification

CloneNo.:

252007G8

Recommended Dilutions:

WB: 1:2000-1:10000

FC: 0.25 µg per 10<sup>6</sup> cells in a 100 µl suspension

## Applications

Tested Applications:

WB, FC

Species Specificity:

n/a

Positive Controls:

WB : Transfected HEK-293T cells,

FC : Transfected HEK-293T cells,

## Background Information

The 218 Linker (also known as the Whitlow linker) is a synthetic peptide sequence, connecting two protein domains, most commonly the Variable Heavy (VH) and Variable Light (VL) chains of an antibody, to form a stable single-chain variable fragment (scFv) (PMID: 8309948). Its standard amino acid sequence is GSTSGSGKPGSGEGSTKG.

## Storage

Storage:

Store at 2 - 8°C. Stable for one year after shipment.

Storage Buffer:

PBS with 0.09% sodium azide, pH7.3

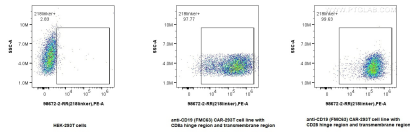
For technical support and original validation data for this product please contact:

T: 1 (888) 4PTGLAB (1-888-478-4522) (toll free in USA), or 1(312) 455-8498 (outside USA)

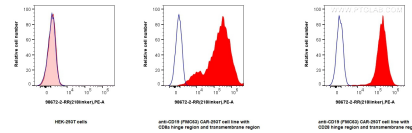
E: [proteintech@ptglab.com](mailto:proteintech@ptglab.com)  
W: [ptglab.com](http://ptglab.com)

This product is exclusively available under Proteintech Group brand and is not available to purchase from any other manufacturer.

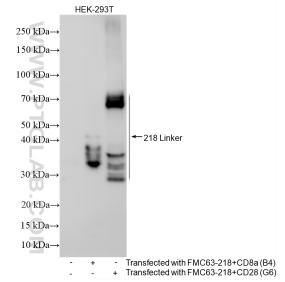
## Selected Validation Data



1x10<sup>6</sup> HEK-293T cells or anti-CD19 (FMC63) CAR with CD28 or CD8a hinge region and transmembrane region transfected HEK-293T cells were surface stained with 0.25 ug Anti-Whitlow/218 Linker Rabbit RecAb (98672-2-RR, Clone:252007G8), or 0.25 ug Rabbit IgG Isotype Control RecAb (98136-1-RR, Clone: 240953C9), and PE-Conjugated Goat Anti-Rabbit IgG(H+L). Cells were not fixed.



1x10<sup>6</sup> HEK-293T cells or anti-CD19 (FMC63) CAR with CD28 or CD8a hinge region and transmembrane region transfected HEK-293T cells were surface stained with 0.25 ug Anti-Whitlow/218 Linker Rabbit RecAb (98672-2-RR, Clone:252007G8) (red), or 0.25 ug Rabbit IgG Isotype Control RecAb (98136-1-RR, Clone: 240953C9) (blue), and PE-Conjugated Goat Anti-Rabbit IgG(H+L). Cells were not fixed.



Various lysates were subjected to SDS PAGE followed by western blot with 98672-2-RR (Whitlow/218 Linker antibody) at dilution of 1:5000 incubated at room temperature for 1.5 hours.