

For Research Use Only

Anti-Whitlow/218 Linker Rabbit Recombinant Antibody, PBS Only

Catalog Number: 98672-3-PBS



Basic Information

Catalog Number:

98672-3-PBS

Size:

1mg, 3 mg/ml

Source:

Rabbit

Isotype:

IgG

GenBank Accession Number:

GeneID (NCBI):

Full Name:

Purification Method:

Protein A purification

CloneNo.:

252007G1

Applications

Tested Applications:

IHC, IF/ICC, FC

Species Specificity:

n/a

Background Information

The 218 Linker (also known as the Whitlow linker) is a synthetic peptide sequence, connecting two protein domains, most commonly the Variable Heavy (VH) and Variable Light (VL) chains of an antibody, to form a stable single-chain variable fragment (scFv) (PMID: 8309948). Its standard amino acid sequence is GSTSGSGKPGSGEGSTKG.

Storage

Storage:

Store at -80°C.

Storage Buffer:

PBS only, pH7.3

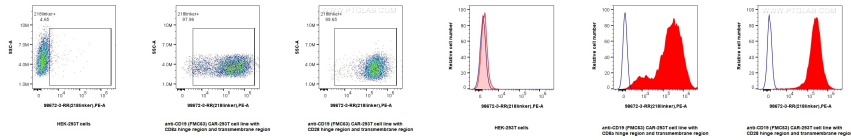
For technical support and original validation data for this product please contact:

T: 1 (888) 4PTGLAB (1-888-478-4522) (toll free in USA), or 1(312) 455-8498 (outside USA)

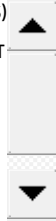
E: proteintech@ptglab.com
W: ptglab.com

This product is exclusively available under Proteintech Group brand and is not available to purchase from any other manufacturer.

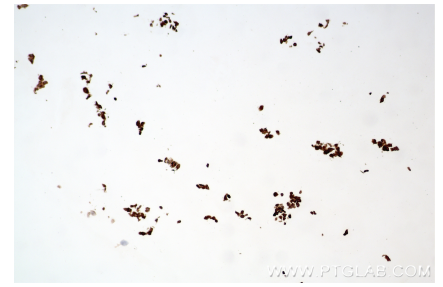
Selected Validation Data



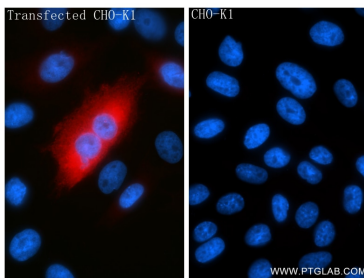
1x10⁶ HEK-293T cells or anti-CD19 (FMC63) CAR with CD28 or CD8a hinge region and transmembrane region transfected HEK-293T cells were surface stained with 0.25 ug Anti-Whitlow/218 Linker Rabbit RecAb (98672-3-RR, Clone:252007G8), or 0.25 ug Rabbit IgG Isotype Control RecAb (98136-1-RR, Clone: 240953C9), and PE-Conjugated Goat Anti-Rabbit IgG(H+L). Cells were not fixed. This data was developed using the same antibody clone with 98672-3-PBS in a



1x10⁶ HEK-293T cells or anti-CD19 (FMC63) CAR with CD28 or CD8a hinge region and transmembrane region transfected HEK-293T cells were surface stained with 0.25 ug Anti-Whitlow/218 Linker Rabbit RecAb (98672-3-RR, Clone:252007G8) (red), or 0.25 ug Rabbit IgG Isotype Control RecAb (98136-1-RR, Clone: 240953C9) (blue), and PE-Conjugated Goat Anti-Rabbit IgG(H+L). Cells were not fixed. This data was developed using the same antibody clone with 98672-3-PBS in a



Immunohistochemical analysis of paraffin-embedded transfected HEK-293T cells slide using 98672-3-RR (Whitlow/218 Linker antibody) at dilution of 1:1000 (under 10x lens). Heat mediated antigen retrieval with Tris-EDTA buffer (pH 9.0). This data was developed using the same antibody clone with 98672-3-PBS in a different storage buffer formulation.



Immunofluorescent analysis of (4% PFA) fixed Transfected CHO cells using 218linker antibody (98672-3-RR, Clone: 252007G1) at dilution of 1:400 and CoraLite®594-Conjugated Goat Anti-Rabbit IgG(H+L) (SA00013-4). This data was developed using the same antibody clone with 98672-3-PBS in a different storage buffer formulation.