

For Research Use Only

Anti-Human Integrin alpha 1/CD49a Rabbit Recombinant Antibody, PBS Only

Catalog Number: 98675-2-PBS



Basic Information

Catalog Number: 98675-2-PBS	GenBank Accession Number: BC137121	Purification Method: Protein A purification
Size: 1mg, 3 mg/ml	GeneID (NCBI): 3672	CloneNo.: 251984B7
Source: Rabbit	UNIPROT ID: P56199	
Isotype: IgG	Full Name: integrin, alpha 1	
Immunogen Catalog Number: EG2089	Calculated MW: 1179 aa, 131 kDa	

Applications

Tested Applications:
FC

Species Specificity:
human

Background Information

The integrins are a superfamily of cell adhesion receptors that bind to extracellular matrix ligands, cell-surface ligands, and soluble ligands (PMID: 17543136). They are transmembrane $\alpha\beta$ heterodimers and at least 24 distinct integrin heterodimers are formed by the combination of 18 α and eight β known subunits (PMID: 17543136; 20029421). In addition to mediating cell adhesion, integrins also play important roles in modulating signal transduction pathways that control cellular responses including migration, proliferation, differentiation, and apoptosis (PMID:19118207). Integrin alpha-1 (ITGA1, CD49a) combines with the beta 1 subunit (ITGB1, CD29) to form a cell-surface receptor for collagen and laminin. This receptor is involved in cell-cell adhesion and may play a role in inflammation and fibrosis (PMID: 2475259; 3257425).

Storage

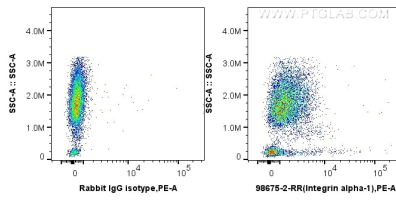
Storage:
Store at -80°C.

Storage Buffer:
PBS only, pH7.3

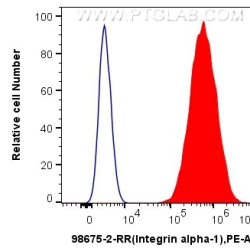
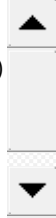
For technical support and original validation data for this product please contact:
T: 1 (888) 4PTGLAB (1-888-478-4522) (toll free in USA), or 1(312) 455-8498 (outside USA) E: proteintech@ptglab.com
W: ptglab.com

This product is exclusively available under Proteintech Group brand and is not available to purchase from any other manufacturer.

Selected Validation Data



1x10⁶ human peripheral blood lymphocytes were surface stained with 0.25 ug Anti-Human Integrin alpha 1/CD49a Rabbit RecAb (98675-2-RR, Clone: 251984B7) or Rabbit IgG Isotype Control RecAb (98136-1-RR, Clone: 240953C9), and PE-Conjugated Goat Anti-Rabbit IgG(H+L). Cells were incubated with FC Receptor Block prior to staining. Cells were not fixed. This data was developed using the same antibody clone with 98675-2-PBS in a different storage



1x10⁶ HeLa cells were surface stained with 0.25 ug Anti-Human Integrin alpha 1/CD49a Rabbit RecAb (98675-2-RR, Clone: 251984B7) (red) or Rabbit IgG Isotype Control RecAb (98136-1-RR, Clone: 240953C9) (blue), and PE-Conjugated Goat Anti-Rabbit IgG(H+L). Cells were not fixed. This data was developed using the same antibody clone with 98675-2-PBS in a different storage buffer formulation.