

For Research Use Only

Anti-Human LY86 Rabbit Recombinant Antibody

Catalog Number: 98678-1-RR



Basic Information

Catalog Number:

98678-1-RR

Size:

100ug, 1000 µg/ml

Source:

Rabbit

Isotype:

IgG

Immunogen Catalog Number:

EG3108

GenBank Accession Number:

NM_004271.4

GeneID (NCBI):

9450

UNIPROT ID:

O95711

Full Name:

Lymphocyte antigen 86

Calculated MW:

18 kDa

Purification Method:

Protein A purification

CloneNo.:

252168G12

Recommended Dilutions:

FC (Intra): 0.25 ug per 10⁶ cells in a 100 µl suspension

Applications

Tested Applications:

FC (Intra)

Species Specificity:

human

Positive Controls:

FC (Intra): human PBMCs,

Background Information

LY86, also known as protein MD-1, is a secreted glycoprotein that is associated with RP105 (TLR family proteins) and plays a significant role in the B cell surface expression of RP105. The RP105/MD-1 complex is expressed on immune cells, including B cells, macrophages, and dendritic cells (PMID: 37861500). By forming the RP105-MD-1 complex, LY86 fine-tunes recognition of bacterial lipopolysaccharide (LPS) and subsequent cytokine production, acting as both a facilitator and a brake on innate immune responses. LY86 influences sterile inflammatory conditions such as atherosclerosis, obesity, insulin resistance and cardiac remodeling, and is being explored as a biomarker for unstable carotid plaques and other immune-mediated diseases (PMID: 39085350).

Storage

Storage:

Store at 2 - 8°C. Stable for one year after shipment.

Storage Buffer:

PBS with 0.09% sodium azide, pH7.3

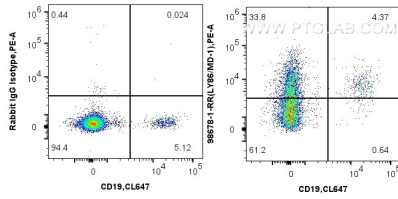
For technical support and original validation data for this product please contact:

T: 1 (888) 4PTGLAB (1-888-478-4522) (toll free in USA), or 1(312) 455-8498 (outside USA)

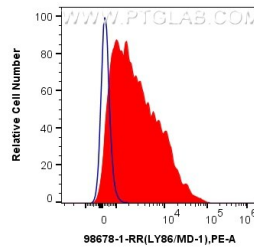
E: proteintech@ptglab.com
W: ptglab.com

This product is exclusively available under Proteintech Group brand and is not available to purchase from any other manufacturer.

Selected Validation Data



1x10⁶ human PBMCs were intracellularly stained with 0.25 ug Anti-Human LY86 Rabbit RecAb (98678-1-RR, Clone:252168G12), or Rabbit IgG Isotype Control RecAb (98136-1-RR, Clone: 240953C9) and PE-Conjugated Goat Anti-Rabbit IgG(H+L). Cells were then stained with CoraLite® Plus 647 Anti-Human CD19. Cells were fixed and permeabilized with Intracellular Flow Cytometry Fixation & Permeabilization Buffer Kit (PF00019). Lymphocytes were gated.



1x10⁶ human PBMCs were intracellularly stained with 0.25 ug Anti-Human LY86 Rabbit RecAb (98678-1-RR, Clone:252168G12)(red) and PE-Conjugated Goat Anti-Rabbit IgG(H+L), or Rabbit IgG Isotype Control RecAb (98136-1-RR, Clone: 240953C9). Cells were fixed and permeabilized with Intracellular Flow Cytometry Fixation & Permeabilization Buffer Kit (PF00019). Lymphocytes were gated.