

For Research Use Only

# Anti-Mouse CD16/CD32 Rabbit Recombinant Antibody, PBS Only

Catalog Number:98679-1-PBS



## Basic Information

<b>Catalog Number:</b> 98679-1-PBS	<b>GenBank Accession Number:</b> NM_001356511	<b>Purification Method:</b> Protein A purification
<b>Size:</b> 1mg , 3 mg/ml	<b>GeneID (NCBI):</b> 14131	<b>CloneNo.:</b> 252820A1
<b>Source:</b> Rabbit	<b>UNIPROT ID:</b> P08508	
<b>Isotype:</b> IgG	<b>Full Name:</b> Fc receptor, IgG, low affinity III	
<b>Immunogen Catalog Number:</b> EG3474	<b>Calculated MW:</b> 30 kDa	

## Applications

**Tested Applications:**  
FC

**Species Specificity:**  
mouse

## Background Information

CD16 (Fcy RIII) is a 50-70 kDa low affinity Fc receptor found on the surface of natural killer cells, neutrophil polymorphonuclear leukocytes, monocytes and macrophages. CD16 mediates antibody-dependent cellular cytotoxicity (ADCC) and other antibody-dependent responses, such as phagocytosis. CD32 (Fcy RII) is a 40 kD transmembrane glycoprotein that binds to the Fc region of IgG with low affinity. CD32 is present on phagocytic cells such as macrophages and neutrophils, and is involved in the process of phagocytosis and clearing of immune complexes. Rabbit anti mouse CD16/32 antibody, clone 252820A1 is specific to the common epitope of CD16 and CD32. It can be used for blocking non-specific binding of immunoglobulins to the Fc receptors by preincubating the cells with the purified antibody at 1 ug per million cells in 100 uL volume for 5-10 minutes prior to immunostaining.

## Storage

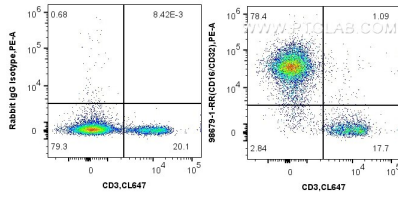
**Storage:**  
Store at -80°C.

**Storage Buffer:**  
PBS only, pH7.3

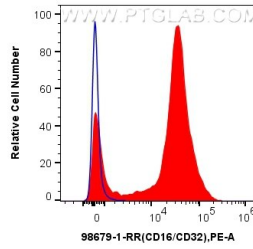
For technical support and original validation data for this product please contact:  
T: 1 (888) 4PTGLAB (1-888-478-4522) (toll free in USA), or 1(312) 455-8498 (outside USA)      E: proteintech@ptglab.com  
W: ptglab.com

**This product is exclusively available under Proteintech Group brand and is not available to purchase from any other manufacturer.**

## Selected Validation Data



1x10<sup>6</sup> mouse splenocytes were surface stained with 0.25 ug Anti-Mouse Fc gamma RIII/CD16+CD32 Rabbit RecAb (98679-1-RR, Clone:252820A1), or Rabbit IgG Isotype Control RecAb (98136-1-RR, Clone: 240953C9) and PE-Conjugated Goat Anti-Rabbit IgG(H+L). Cells were then stained with Coralite® Plus 647 Anti-Mouse CD3e. Cells were not fixed. This data was developed using the same antibody clone with 98679-1-PBS in a different storage



1x10<sup>6</sup> mouse splenocytes were surface stained with 0.25 ug Anti-Mouse Fc gamma RIII/CD16+CD32 Rabbit RecAb (98679-1-RR, Clone:252820A1) (red) and PE-Conjugated Goat Anti-Rabbit IgG(H+L), or Rabbit IgG Isotype Control RecAb (98136-1-RR, Clone: 240953C9) (blue). Cells were not fixed. This data was developed using the same antibody clone with 98679-1-PBS in a different storage buffer formulation.