

For Research Use Only

Anti-Mouse CD16/CD32 Rabbit Recombinant Antibody

Catalog Number: 98679-1-RR



Basic Information

Catalog Number:

98679-1-RR

Size:

100ug, 1000 µg/ml

Source:

Rabbit

Isotype:

IgG

Immunogen Catalog Number:

EG3474

GenBank Accession Number:

NM_001356511

GeneID (NCBI):

14131

UNIPROT ID:

P08508

Full Name:

Fc receptor, IgG, low affinity III

Calculated MW:

30 kDa

Purification Method:

Protein A purification

CloneNo.:

252820A1

Recommended Dilutions:

FC: 0.25 µg per 10⁶ cells in a 100 µl suspension

Applications

Tested Applications:

FC

Species Specificity:

mouse

Positive Controls:

FC : mouse splenocytes,

Background Information

CD16 (FcyRIII) is a 50-70 kDa low affinity Fc receptor found on the surface of natural killer cells, neutrophil polymorphonuclear leukocytes, monocytes and macrophages. CD16 mediates antibody-dependent cellular cytotoxicity (ADCC) and other antibody-dependent responses, such as phagocytosis. CD32 (FcyRII) is a 40 kD transmembrane glycoprotein that binds to the Fc region of IgG with low affinity. CD32 is present on phagocytic cells such as macrophages and neutrophils, and is involved in the process of phagocytosis and clearing of immune complexes. Rabbit anti mouse CD16/32 antibody, clone 252820A1 is specific to the common epitope of CD16 and CD32. It can be used for blocking non-specific binding of immunoglobulins to the Fc receptors by preincubating the cells with the purified antibody at 1 µg per million cells in 100 µL volume for 5-10 minutes prior to immunostaining.

Storage

Storage:

Store at 2 - 8°C. Stable for one year after shipment.

Storage Buffer:

PBS with 0.09% sodium azide, pH7.3

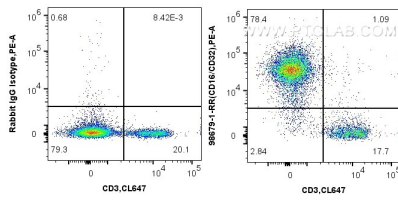
For technical support and original validation data for this product please contact:

T: 1 (888) 4PTGLAB (1-888-478-4522) (toll free in USA), or 1(312) 455-8498 (outside USA)

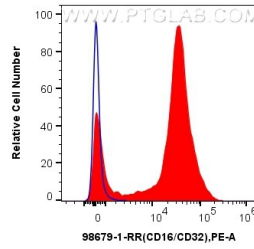
E: proteintech@ptglab.com
W: ptglab.com

This product is exclusively available under Proteintech Group brand and is not available to purchase from any other manufacturer.

Selected Validation Data



1x10⁶ mouse splenocytes were surface stained with 0.25 ug Anti-Mouse Fc gamma RIII/CD16+CD32 Rabbit RecAb (98679-1-RR, Clone:252820A1), or Rabbit IgG Isotype Control RecAb (98136-1-RR, Clone: 240953C9) and PE-Conjugated Goat Anti-Rabbit IgG(H+L). Cells were then stained with CoraLite® Plus 647 Anti-Mouse CD3e. Cells were not fixed.



1x10⁶ mouse splenocytes were surface stained with 0.25 ug Anti-Mouse Fc gamma RIII/CD16+CD32 Rabbit RecAb (98679-1-RR, Clone:252820A1) (red) and PE-Conjugated Goat Anti-Rabbit IgG(H+L), or Rabbit IgG Isotype Control RecAb (98136-1-RR, Clone: 240953C9) (blue). Cells were not fixed.