

For Research Use Only

# Anti-Human PKD2L2 Rabbit Recombinant Antibody

Catalog Number: 98682-1-RR



## Basic Information

Catalog Number:

98682-1-RR

Size:

100ug, 1000 µg/ml

Source:

Rabbit

Isotype:

IgG

GenBank Accession Number:

BC044581

GeneID (NCBI):

27039

UNIPROT ID:

Q9NZM6

Full Name:

polycystic kidney disease 2-like 2

Calculated MW:

74 kDa

Purification Method:

Protein A purification

CloneNo.:

251120E1

Recommended Dilutions:

FC: 0.25 ug per 10<sup>6</sup> cells in a 100 µl suspension

## Applications

Tested Applications:

FC

Species Specificity:

human

Positive Controls:

FC : U2OS cells,

## Background Information

PKD2L2 (Polycystin-2-like protein 2) is a transient receptor potential (TRP) ion channel, specifically a member of the TRPP (Polycystin) subfamily. PKD2L2 exhibits a lower single conductance but no spontaneous channel activity (PMID:16883570).

## Storage

Storage:

Store at 2 - 8°C. Stable for one year after shipment.

Storage Buffer:

PBS with 0.09% sodium azide, pH7.3

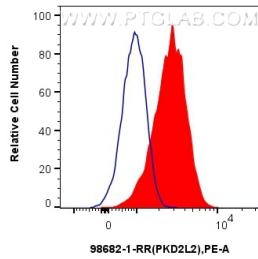
For technical support and original validation data for this product please contact:

T: 1 (888) 4PTGLAB (1-888-478-4522) (toll free in USA), or 1(312) 455-8498 (outside USA)

E: [proteintech@ptglab.com](mailto:proteintech@ptglab.com)  
W: [ptglab.com](http://ptglab.com)

This product is exclusively available under Proteintech Group brand and is not available to purchase from any other manufacturer.

## Selected Validation Data



1x10<sup>6</sup> U2OS cells were surface stained with 0.25 ug Anti-Human PKD2L2 Rabbit RecAb (98682-1-RR, Clone:251120E1) and PE-conjugated Goat Anti-Rabbit IgG (red), or 0.25 ug Rabbit IgG Isotype Control RecAb (98136-1-RR, Clone: 240953C9) (blue) and PE-conjugated Goat Anti-Rabbit IgG. Cells were not fixed.