

For Research Use Only

Anti-Human CRHR1 Rabbit Recombinant Antibody

Catalog Number: 98686-2-RR



Basic Information

Catalog Number:

98686-2-RR

Size:

100ug , 1000 µg/ml

Source:

Rabbit

Isotype:

IgG

GenBank Accession Number:

NM_004382

GeneID (NCBI):

1394

UNIPROT ID:

P34998

Full Name:

corticotropin releasing hormone receptor 1

Calculated MW:

48 kDa

Purification Method:

Protein A purification

CloneNo.:

251134A8

Recommended Dilutions:

FC: 0.25 ug per 10⁶ cells in a 100 µl suspension

Applications

Tested Applications:

FC

Species Specificity:

human

Positive Controls:

FC : Transfected CHO-K1 cells,

Background Information

Corticotropin-releasing hormone (CRH, also known as Corticotropin-releasing factor, CRF) is a 41 amino acid peptide hormone and a key regulator of the stress response. CRH and the related urocortin peptides (UCN, UCN2 and UCN3) mediate their actions through two mammalian receptor subtypes, CRHR1 and CRHR2 (PMID: 23863939). CRHR1 (also known as CRFR1) exhibits high affinity towards CRH and UCN but low affinity towards UCN2 and no affinity towards UCN3 (PMID: 22684850). The activity of this receptor is mediated by G proteins which activate adenylyl cyclase. Widely distributed throughout the brain, CRHR1 critically controls behavioral adaptation to stress and is causally linked to emotional disorders (PMID: 21885734). Alternative splicing results in multiple transcript variants encoding distinct isoforms of CRHR1.

Storage

Storage:

Store at 2 - 8°C. Stable for one year after shipment.

Storage Buffer:

PBS with 0.09% sodium azide, pH7.3

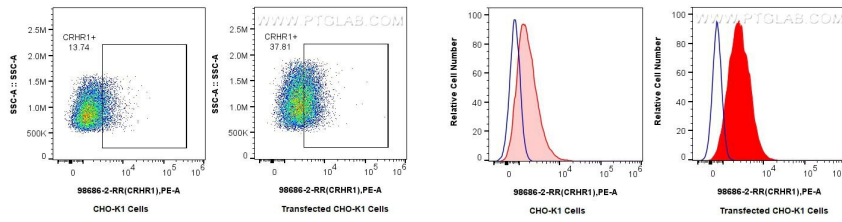
For technical support and original validation data for this product please contact:

T: 1 (888) 4PTGLAB (1-888-478-4522) (toll free in USA), or 1(312) 455-8498 (outside USA)

E: proteintech@ptglab.com
W: ptglab.com

This product is exclusively available under Proteintech Group brand and is not available to purchase from any other manufacturer.

Selected Validation Data



1×10^6 CHO-K1 (left) or CRHR1-transfected CHO-K1 (right) were surface stained with 0.25 μ g Anti-Human CRHR1 Rabbit RecAb (98686-2-RR, Clone: 251134A8) and PE-conjugated Goat Anti-Rabbit IgG. Cells were not fixed.

1×10^6 CHO-K1 (left) or CRHR1-transfected CHO-K1 (right) were surface stained with 0.25 μ g Anti-Human CRHR1 Rabbit RecAb (98686-2-RR, Clone: 251134A8) (red) or 0.25 μ g Rabbit IgG Isotype Control RecAb (98136-1-RR, Clone: 240953C9) (blue), and PE-conjugated Goat Anti-Rabbit IgG. Cells were not fixed.