

For Research Use Only

Anti-Canine CXCL8/IL-8 Rabbit Recombinant Antibody, PBS Only

Catalog Number: 98689-3-PBS



Basic Information

Catalog Number: 98689-3-PBS	GenBank Accession Number: NM_001003200.1	Purification Method: Protein A purification
Size: 1mg, 3 mg/ml	GeneID (NCBI): 403850	CloneNo.: 251306F2
Source: Rabbit	UNIPROT ID: P41324	
Isotype: IgG	Full Name: Interleukin-8	
Immunogen Catalog Number: EG4552	Calculated MW: 11 kDa	

Applications

Tested Applications:
FC (Intra)

Species Specificity:
canine

Background Information

Interleukin 8 (IL-8), also known as CXCL8, is a CXC chemokine family member. This chemokine is secreted by a variety of cell types including monocyte/macrophages, T cells, neutrophils, fibroblasts, endothelial cells, and various tumor cell lines in response to inflammatory stimuli. IL-8 has two primary functions. It induces chemotaxis in target cells, primarily neutrophils but also other granulocytes, causing them to migrate toward the site of infection. IL-8 also induces phagocytosis once they have arrived. This gene is believed to play a role in the pathogenesis of bronchiolitis, a common respiratory tract disease caused by viral infection. IL-8 is also known to be a potent promoter of angiogenesis. IL-8 has been associated with tumor angiogenesis, metastasis, and poor prognosis in breast cancer. IL-8 may present a novel therapeutic target for estrogen driven breast carcinogenesis and tumor progression.

Storage

Storage:
Store at -80°C.

Storage Buffer:
PBS only, pH7.3

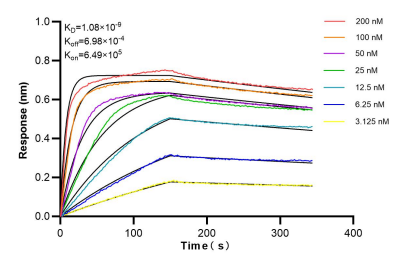
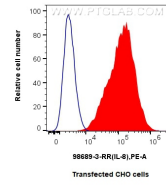
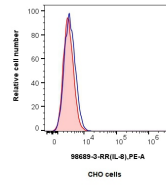
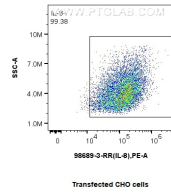
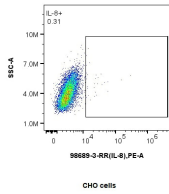
For technical support and original validation data for this product please contact:

T: 1 (888) 4PTGLAB (1-888-478-4522) (toll free in USA), or 1(312) 455-8498 (outside USA)

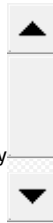
E: proteintech@ptglab.com
W: ptglab.com

This product is exclusively available under Proteintech Group brand and is not available to purchase from any other manufacturer.

Selected Validation Data



1x10⁶ CHO cells and IL-8 Transfected CHO cells were intracellularly stained with 0.25 ug Anti-Canine IL-8 Rabbit RecAb (98689-3-RR, Clone:251306F2), or 0.25 ug Rabbit IgG Isotype Control RecAb (98136-1-RR, Clone: 240953C9), and PE-Conjugated Goat Anti-Rabbit IgG(H+L). Cells were fixed with 4% PFA and permeabilized with Flow Cytometry Perm Buffer (PF00017). This data was developed using the same antibody clone with 98689-3-PBS in a different storage



1x10⁶ CHO cells and IL-8 Transfected CHO cells were intracellularly stained with 0.25 ug Anti-Canine IL-8 Rabbit RecAb (98689-3-RR, Clone:251306F2) (red), or 0.25 ug Rabbit IgG Isotype Control RecAb (98136-1-RR, Clone: 240953C9) (blue), and PE-Conjugated Goat Anti-Rabbit IgG(H+L). Cells were fixed with 4% PFA and permeabilized with Flow Cytometry Perm Buffer (PF00017). This data was developed using the same antibody clone with 98689-3-PBS in a different storage



Bi-layer interferometry (BLI) kinetic assays of 98689-3-RR against Canine CXCL8/IL-8 were performed. The affinity constant is 1.08 nM.