

For Research Use Only

# Anti-Canine CXCL8/IL-8 Rabbit Recombinant Antibody

Catalog Number: 98689-3-RR



## Basic Information

<b>Catalog Number:</b> 98689-3-RR	<b>GenBank Accession Number:</b> NM_001003200.1	<b>Purification Method:</b> Protein A purification
<b>Size:</b> 100ug , 1000 µg/ml	<b>GeneID (NCBI):</b> 403850	<b>CloneNo.:</b> 251306F2
<b>Source:</b> Rabbit	<b>UNIPROT ID:</b> P41324	<b>Recommended Dilutions:</b> FC (Intra): 0.25 ug per 10 <sup>6</sup> cells in a 100 µl suspension
<b>Isotype:</b> IgG	<b>Full Name:</b> Interleukin-8	
<b>Immunogen Catalog Number:</b> EG4552	<b>Calculated MW:</b> 11 kDa	

## Applications

<b>Tested Applications:</b> FC (Intra)	<b>Positive Controls:</b> FC (Intra) : Transfected CHO,
<b>Species Specificity:</b> canine	

## Background Information

Interleukin 8 (IL-8), also known as CXCL8, is a CXC chemokine family member. This chemokine is secreted by a variety of cell types including monocyte/macrophages, T cells, neutrophils, fibroblasts, endothelial cells, and various tumor cell lines in response to inflammatory stimuli. IL-8 has two primary functions. It induces chemotaxis in target cells, primarily neutrophils but also other granulocytes, causing them to migrate toward the site of infection. IL-8 also induces phagocytosis once they have arrived. This gene is believed to play a role in the pathogenesis of bronchiolitis, a common respiratory tract disease caused by viral infection. IL-8 is also known to be a potent promoter of angiogenesis. IL-8 has been associated with tumor angiogenesis, metastasis, and poor prognosis in breast cancer. IL-8 may present a novel therapeutic target for estrogen driven breast carcinogenesis and tumor progression.

## Storage

**Storage:**  
Store at 2 - 8°C. Stable for one year after shipment.  
**Storage Buffer:**  
PBS with 0.09% sodium azide, pH7.3

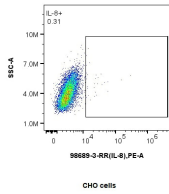
For technical support and original validation data for this product please contact:

T: 1 (888) 4PTGLAB (1-888-478-4522) (toll free in USA), or 1(312) 455-8498 (outside USA)

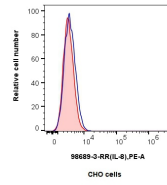
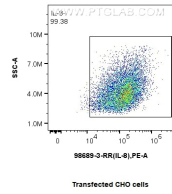
E: [proteintech@ptglab.com](mailto:proteintech@ptglab.com)  
W: [ptglab.com](http://ptglab.com)

**This product is exclusively available under Proteintech Group brand and is not available to purchase from any other manufacturer.**

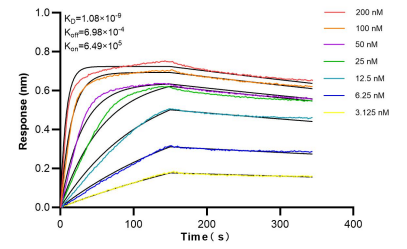
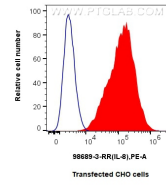
## Selected Validation Data



1x10<sup>6</sup> CHO cells and IL-8 Transfected CHO cells were intracellularly stained with 0.25 ug Anti-Canine IL-8 Rabbit RecAb (98689-3-RR, Clone:251306F2), or 0.25 ug Rabbit IgG Isotype Control RecAb (98136-1-RR, Clone: 240953C9), and PE-Conjugated Goat Anti-Rabbit IgG(H+L). Cells were fixed with 4% PFA and permeabilized with Flow Cytometry Perm Buffer (PF00017).



1x10<sup>6</sup> CHO cells and IL-8 Transfected CHO cells were intracellularly stained with 0.25 ug Anti-Canine IL-8 Rabbit RecAb (98689-3-RR, Clone:251306F2) (red), or 0.25 ug Rabbit IgG Isotype Control RecAb (98136-1-RR, Clone: 240953C9) (blue), and PE-Conjugated Goat Anti-Rabbit IgG(H+L). Cells were fixed with 4% PFA and permeabilized with Flow Cytometry Perm Buffer (PF00017).



Bi-layer interferometry (BLI) kinetic assays of 98689-3-RR against Canine CXCL8/IL-8 were performed. The affinity constant is 1.08 nM.