

For Research Use Only

# Anti-Pig CD8b Rabbit Recombinant Antibody, PBS Only

Catalog Number: 98700-1-PBS



## Basic Information

Catalog Number:

98700-1-PBS

Size:

1mg, 3 mg/ml

Source:

Rabbit

Isotype:

IgG

Immunogen Catalog Number:

EG7161

GenBank Accession Number:

/

GeneID (NCBI):

396636

UNIPROT ID:

F1SVD7

Full Name:

CD8 subunit beta

Calculated MW:

23 kDa

Purification Method:

Protein A purification

CloneNo.:

251664G7

## Applications

Tested Applications:

FC

Species Specificity:

pig

## Background Information

CD8b (T-cell surface glycoprotein CD8 beta chain) is an integral membrane glycoprotein that forms disulfide-linked heterodimers with CD8a (CD8 alpha chain). The CD8 alpha/beta heterodimer is the predominant CD8 complex expressed on the cell surface (PMID: 1534146; 2111591). CD8 is a transmembrane glycoprotein predominantly expressed on the surface of cytotoxic T cells and can also be found on natural killer cells, cortical thymocytes, and dendritic cells. CD8 serves as a co-receptor for the T cell receptor (TCR). Both CD8 and TCR recognize antigens displayed by an antigen presenting cell (APC) in the context of class I MHC molecules. CD8 plays a role in T cell development and activation of mature T cells.

## Storage

Storage:

Store at -80°C.

Storage Buffer:

PBS only, pH7.3

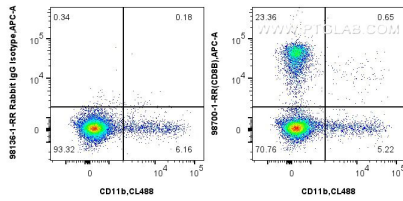
For technical support and original validation data for this product please contact:

T: 1 (888) 4PTGLAB (1-888-478-4522) (toll free in USA), or 1(312) 455-8498 (outside USA)

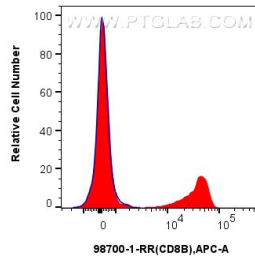
E: [proteintech@ptglab.com](mailto:proteintech@ptglab.com)  
W: [ptglab.com](http://ptglab.com)

This product is exclusively available under Proteintech Group brand and is not available to purchase from any other manufacturer.

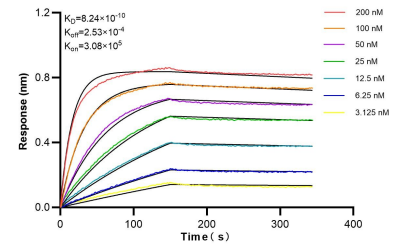
## Selected Validation Data



1x10<sup>6</sup> pig PBMCs were surface stained with 0.25 ug Anti-Pig CD8B Rabbit RecAb (98700-1-RR, Clone:251664G7), or 0.25 ug Rabbit IgG Isotype Control RecAb (98136-1-RR, Clone: 240953C9) and APC-Conjugated Goat Anti-Rabbit IgG(H+L). Cells were then stained with CoraLite® Plus 488 Anti-Mouse CD11b. Cells were not fixed. This data was developed using the same antibody clone with 98700-1-PBS in a different storage buffer formulation.



1x10<sup>6</sup> pig PBMCs were surface stained with 0.25 ug Anti-Pig CD8B Rabbit RecAb (98700-1-RR, Clone:251664G7) (red), or 0.25 ug Rabbit IgG Isotype Control RecAb (98136-1-RR, Clone: 240953C9) (blue) and APC-Conjugated Goat Anti-Rabbit IgG(H+L). Cells were not fixed. This data was developed using the same antibody clone with 98700-1-PBS in a different storage buffer formulation.



Bi-layer interferometry (BLI) kinetic assays of 98700-1-RR against Pig CD8b were performed. The affinity constant is 0.824 nM.