

For Research Use Only

# Anti-Human PTCH2 Rabbit Recombinant Antibody

Catalog Number: 98705-2-RR



## Basic Information

Catalog Number:

98705-2-RR

Size:

100ug, 1000 µg/ml

Source:

Rabbit

Isotype:

IgG

GenBank Accession Number:

NM\_003738

GeneID (NCBI):

8643

UNIPROT ID:

Q9Y6C5

Full Name:

patched homolog 2 (Drosophila)

Calculated MW:

131 kDa

Purification Method:

Protein A purification

CloneNo.:

251786C3

Recommended Dilutions:

FC: 0.25 ug per 10<sup>6</sup> cells in a 100 µl suspension

## Applications

Tested Applications:

FC

Species Specificity:

human

Positive Controls:

FC : SH-SY5Y cells,

## Background Information

PTCH1 (patched homolog 1) and PTCH2 are twelve-pass transmembrane proteins that act receptors of Hedgehog signaling pathway (PMID: 8906794; 9811851). Signals of Hedgehog family proteins (SHH, IHH and DHH in humans) are transduced through Patched family receptors (PTCH1 and PTCH2) and Smoothened (SMO) to Gli family transcription factors. Hedgehog pathway plays a critical role in embryonic development and tissue homeostasis, and its dysregulation has been implicated in many human diseases including congenital disorder and cancer (PMID: 23719536; 23532857). PTCH2 may function as a tumor suppressor in the Hedgehog signaling pathway. Alterations in PTCH2 gene have been associated with nevoid basal cell carcinoma syndrome, basal cell carcinoma, medulloblastoma, and susceptibility to congenital macrostomia. This antibody is specific to PTCH2.

## Storage

Storage:

Store at 2 - 8°C. Stable for one year after shipment.

Storage Buffer:

PBS with 0.09% sodium azide, pH7.3

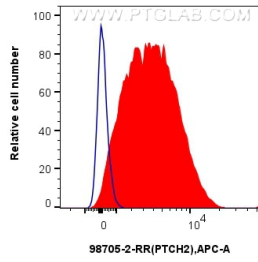
For technical support and original validation data for this product please contact:

T: 1 (888) 4PTGLAB (1-888-478-4522) (toll free in USA), or 1(312) 455-8498 (outside USA)

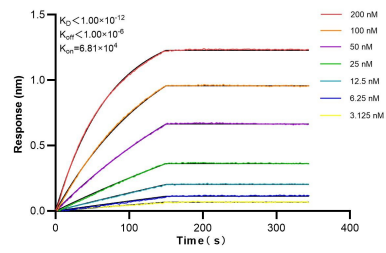
E: [proteintech@ptglab.com](mailto:proteintech@ptglab.com)  
W: [ptglab.com](http://ptglab.com)

This product is exclusively available under Proteintech Group brand and is not available to purchase from any other manufacturer.

## Selected Validation Data



$1 \times 10^6$  SH-SY5Y cells were surface stained with 0.25  $\mu$ g Anti-Human PTCH2 Rabbit RecAb (98705-2-RR, Clone: 251786C3) (red) or 0.25  $\mu$ g Rabbit IgG Isotype Control RecAb (98136-1-RR, Clone: 240953C9) (blue), and APC-Conjugated Goat Anti-Rabbit IgG(H+L). Cells were not fixed.



Biolayer interferometry (BLI) kinetic assays of 98705-2-RR against Human PTCH2 were performed. The affinity constant is below 1 pM.