

For Research Use Only

Anti-Human Alpha Synuclein Rabbit Recombinant Antibody, PBS Only

Catalog Number: 98708-2-PBS



Basic Information

Catalog Number:

98708-2-PBS

Size:

1mg, 3 mg/ml

Source:

Rabbit

Isotype:

IgG

Immunogen Catalog Number:

EG5390

GenBank Accession Number:

BC108275

GeneID (NCBI):

6622

UNIPROT ID:

P37840

Full Name:

synuclein, alpha (non A4 component of amyloid precursor)

Purification Method:

Protein A purification

CloneNo.:

251410F3

Applications

Tested Applications:

IHC, FC (Intra)

Species Specificity:

human

Background Information

Alpha Synuclein (α -syn) is a 14-19 kDa phosphoprotein that is primarily localized to the presynaptic terminals of mature neurons, where it is involved in synaptic function and plasticity. α -syn has drawn intense interest ever since the late 1990s, when the first α -synuclein missense mutation was identified as a cause of familial Parkinson's disease (PD). Aggregated and hyper-phosphorylated forms of α -syn protein are the pathological hallmark of Lewy body disease, which includes Parkinson's disease (PD), diffuse Lewy body disease (DLBD), and Lewy body variant of Alzheimer's disease (LBV). This antibody can recognize all the isoforms of α -syn.

Storage

Storage:

Store at -80°C.

Storage Buffer:

PBS only, pH7.3

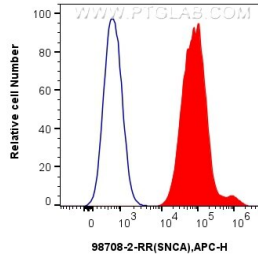
For technical support and original validation data for this product please contact:

T: 1 (888) 4PTGLAB (1-888-478-4522) (toll free in USA), or 1(312) 455-8498 (outside USA)

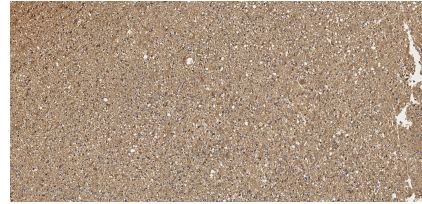
E: proteintech@ptglab.com
W: ptglab.com

This product is exclusively available under Proteintech Group brand and is not available to purchase from any other manufacturer.

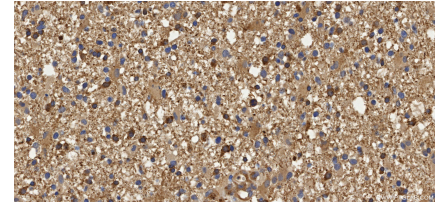
Selected Validation Data



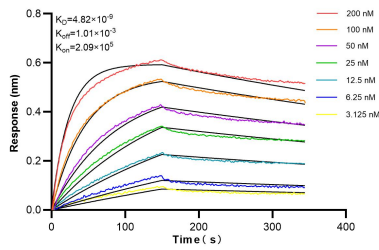
1x10⁶ SH-SY5Y cells were intracellularly stained with 0.25 ug Anti-Human Alpha Synuclein Rabbit RecAb (98708-2-RR, Clone:251410F3)(red),or Rabbit IgG Isotype Control RecAb (98136-1-RR, Clone: 240953C9) (blue) and APC-Conjugated Goat Anti-Rabbit IgG(H+L). Cells were fixed and permeabilized with Intracellular Flow Cytometry Fixation & Permeabilization Buffer Kit (PF00019). This data was developed using the same antibody clone



Immunohistochemical analysis of paraffin-embedded Human brain cancer(Astrocytoma) slide using 98708-2-RR (Alpha Synuclein antibody) at dilution of 1:1000 (under 10x lens). Heat mediated antigen retrieval with Tris-EDTA buffer (pH 9.0). This data was developed using the same antibody clone with 98708-2-PBS in a different storage buffer formulation.



Immunohistochemical analysis of paraffin-embedded Human brain cancer(Astrocytoma) slide using 98708-2-RR (Alpha Synuclein antibody) at dilution of 1:1000 (under 40x lens). Heat mediated antigen retrieval with Tris-EDTA buffer (pH 9.0). This data was developed using the same antibody clone with 98708-2-PBS in a different storage buffer formulation.



Biolayer interferometry (BLI) kinetic assays of 98708-2-RR against Human Alpha Synuclein were performed. The affinity constant is 4.82 nM.