

For Research Use Only

Anti-Human Alpha Synuclein Rabbit Recombinant Antibody

Catalog Number: 98708-2-RR



Basic Information

Catalog Number: 98708-2-RR	GenBank Accession Number: BC108275	Purification Method: Protein A purification
Size: 100ug, 1000 µg/ml	GeneID (NCBI): 6622	CloneNo.: 251410F3
Source: Rabbit	UNIPROT ID: P37840	Recommended Dilutions: IHC: 1:500-1:2000
Isotype: IgG	Full Name: synuclein, alpha (non A4 component of amyloid precursor)	FC (Intra): 0.25 ug per 10 ⁶ cells in a 100 µl suspension
Immunogen Catalog Number: EG5390		

Applications

Tested Applications: IHC, FC (Intra)	Positive Controls: IHC: Human brain cancer Astrocitoma , FC (Intra): SH-SY5Y cells,
Species Specificity: human	

Note-IHC: suggested antigen retrieval with TE buffer pH 9.0; (*) Alternatively, antigen retrieval may be performed with citrate buffer pH 6.0

Background Information

Alpha Synuclein (α -syn) is a 14-19 kDa phosphoprotein that is primarily localized to the presynaptic terminals of mature neurons, where it is involved in synaptic function and plasticity. α -syn has drawn intense interest ever since the late 1990s, when the first α -synuclein missense mutation was identified as a cause of familial Parkinson's disease (PD). Aggregated and hyper-phosphorylated forms of α -syn protein are the pathological hallmark of Lewy body disease, which includes Parkinson's disease (PD), diffuse Lewy body disease (DLBD), and Lewy body variant of Alzheimer's disease (LBV). This antibody can recognize all the isoforms of α -syn.

Storage

Storage:
Store at 2 - 8°C. Stable for one year after shipment.
Storage Buffer:
PBS with 0.09% sodium azide, pH7.3

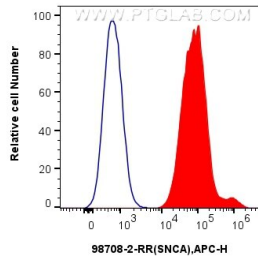
For technical support and original validation data for this product please contact:

T: 1 (888) 4PTGLAB (1-888-478-4522) (toll free in USA), or 1(312) 455-8498 (outside USA)

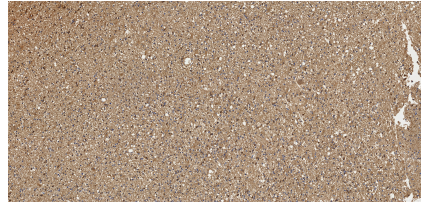
E: proteintech@ptglab.com
W: ptglab.com

This product is exclusively available under Proteintech Group brand and is not available to purchase from any other manufacturer.

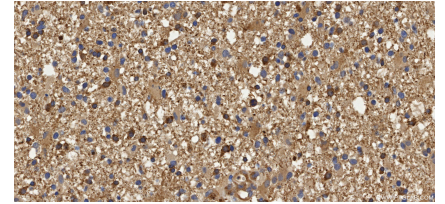
Selected Validation Data



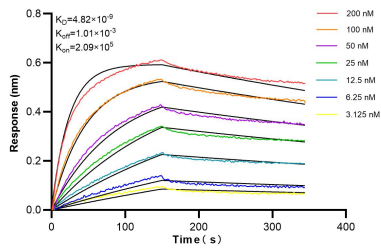
1×10^6 SH-SY5Y cells were intracellularly stained with 0.25 μ g Anti-Human Alpha Synuclein Rabbit RecAb (98708-2-RR, Clone:251410F3)(red), or Rabbit IgG Isotype Control RecAb (98136-1-RR, Clone: 240953C9) (blue) and APC-Conjugated Goat Anti-Rabbit IgG(H+L). Cells were fixed and permeabilized with Intracellular Flow Cytometry Fixation & Permeabilization Buffer Kit (PF00019).



Immunohistochemical analysis of paraffin-embedded Human brain cancer (Astrocytoma) slide using 98708-2-RR (Alpha Synuclein antibody) at dilution of 1:1000 (under 10x lens). Heat mediated antigen retrieval with Tris-EDTA buffer (pH 9.0).



Immunohistochemical analysis of paraffin-embedded Human brain cancer (Astrocytoma) slide using 98708-2-RR (Alpha Synuclein antibody) at dilution of 1:1000 (under 40x lens). Heat mediated antigen retrieval with Tris-EDTA buffer (pH 9.0).



Biolayer interferometry (BLI) kinetic assays of 98708-2-RR against Human Alpha Synuclein were performed. The affinity constant is 4.82 nM.