

For Research Use Only

# Anti-Human TEM1/CD248 Rabbit Recombinant Antibody

Catalog Number: 98709-3-RR



## Basic Information

<b>Catalog Number:</b> 98709-3-RR	<b>GenBank Accession Number:</b> BC051340	<b>Purification Method:</b> Protein A purification
<b>Size:</b> 100ug , 1000 µg/ml	<b>GeneID (NCBI):</b> 57124	<b>CloneNo.:</b> 251338B12
<b>Source:</b> Rabbit	<b>UNIPROT ID:</b> Q9HCU0	<b>Recommended Dilutions:</b> FC: 0.25 ug per 10 <sup>6</sup> cells in a 100 µl suspension
<b>Isotype:</b> IgG	<b>Full Name:</b> CD248 molecule, endosialin	
<b>Immunogen Catalog Number:</b> EG4427	<b>Calculated MW:</b> 757 aa, 81 kDa	

## Applications

<b>Tested Applications:</b> FC	<b>Positive Controls:</b> FC : human peripheral blood lymphocytes,
<b>Species Specificity:</b> human	

## Background Information

TEM1 (Tumor endothelial marker 1), also named as CD248, Endosialin and CD164L1, is a C-type lectin-like domain (CTLN) containing type I transmembrane glycoprotein. It is now considered to be a highly selective marker for activated perivascular and stromal cells, detected in most cancers and at least some inflammatory disorders. CD248 plays a role in tumor angiogenesis. It is a potential diagnostic tool and therapeutic target of inflammatory and malignant disease. Two isoforms of human TEM1 exist. The calculated molecular weights of the two isoforms are 81 kDa and 46 kDa, respectively. Native TEM1 can be glycosylated, and the glycosylated form has a larger apparent molecular weight than 81 kDa.

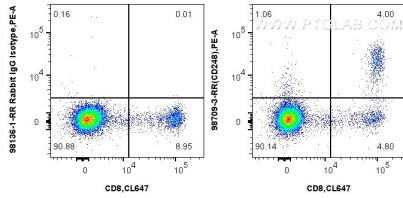
## Storage

**Storage:**  
Store at 2 - 8°C. Stable for one year after shipment.  
**Storage Buffer:**  
PBS with 0.09% sodium azide, pH7.3

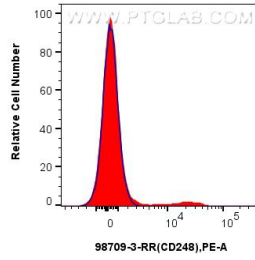
For technical support and original validation data for this product please contact:  
T: 1 (888) 4PTGLAB (1-888-478-4522) (toll free in USA), or 1(312) 455-8498 (outside USA)      E: proteintech@ptglab.com  
W: ptglab.com

This product is exclusively available under Proteintech Group brand and is not available to purchase from any other manufacturer.

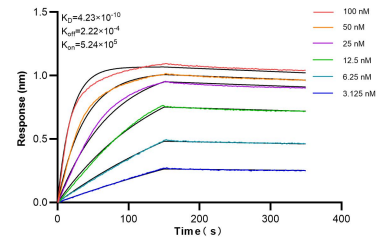
## Selected Validation Data



1x10<sup>6</sup> human peripheral blood lymphocytes were surface stained with 0.25 ug Anti-Human TEM1/CD248 Rabbit RecAb (98709-3-RR, Clone: 251338812) or 0.25 ug Rabbit IgG Isotype Control RecAb (98136-1-RR, Clone: 240953C9), and PE-Conjugated Goat Anti-Rabbit IgG(H+L). Cells were then stained with CoraLite® Plus 647 Anti-Human CD8a. Cells were incubated with FC Receptor Block prior to staining. Cells were not fixed.



1x10<sup>6</sup> human peripheral blood lymphocytes were surface stained with 0.25 ug Anti-Human TEM1/CD248 Rabbit RecAb (98709-3-RR, Clone: 251338812) (red) or 0.25 ug Rabbit IgG Isotype Control RecAb (98136-1-RR, Clone: 240953C9) (blue), and PE-Conjugated Goat Anti-Rabbit IgG(H+L). Cells were incubated with FC Receptor Block prior to staining. Cells were not fixed.



Bi-layer interferometry (BLI) kinetic assays of 98709-3-RR against Human TEM1/CD248 were performed. The affinity constant is 0.423 nM.