

For Research Use Only

# Anti-Human Ig Lambda Light Chain Rabbit Recombinant Antibody

Catalog Number: 98723-2-RR



## Basic Information

Catalog Number:

98723-2-RR

Size:

100ug, 1000 µg/ml

Source:

Rabbit

Isotype:

IgG

Immunogen Catalog Number:

EG6676

GenBank Accession Number:

GeneID (NCBI):

3500

Full Name:

immunoglobulin heavy constant  
gamma 1 (G1m marker)

Purification Method:

Protein A purification

CloneNo.:

251497D8

Recommended Dilutions:

IHC: 1:500-1:2000

FC: 0.25 ug per 10<sup>6</sup> cells in a 100 µl  
suspension

## Applications

Tested Applications:

IHC, FC

Species Specificity:

human

Positive Controls:

IHC: human tonsillitis tissue,

FC: human PBMCs,

**Note-IHC: suggested antigen retrieval with TE buffer pH 9.0; (\*) Alternatively, antigen retrieval may be performed with citrate buffer pH 6.0**

## Background Information

Human Ig lambda ( $\lambda$ ) light chain is one of the two types of light chains (the other being kappa,  $\kappa$ ) that constitute the basic building blocks of human antibodies (immunoglobulins). Each antibody molecule contains two identical light chains paired with two identical heavy chains, forming the characteristic Y-shaped structure. It is an essential component of the humoral immune system, providing structural diversity for antigen recognition while serving as a critical diagnostic marker for plasma cell dyscrasias.

## Storage

Storage:

Store at 2 - 8°C. Stable for one year after shipment.

Storage Buffer:

PBS with 0.09% sodium azide, pH7.3

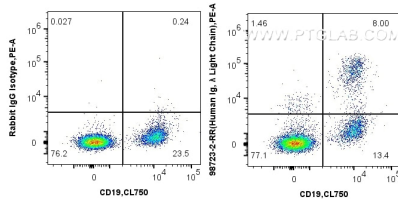
For technical support and original validation data for this product please contact:

T: 1 (888) 4PTGLAB (1-888-478-4522) (toll free  
in USA), or 1(312) 455-8498 (outside USA)

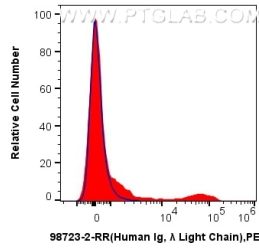
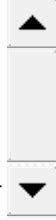
E: [proteintech@ptglab.com](mailto:proteintech@ptglab.com)  
W: [ptglab.com](http://ptglab.com)

**This product is exclusively available under Proteintech Group brand and is not available to purchase from any other manufacturer.**

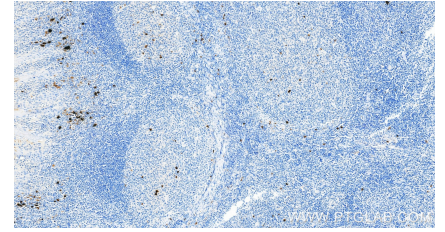
## Selected Validation Data



1x10<sup>6</sup> human PBMCs were surface stained with 0.25 ug Anti-Human Ig Lambda Light Chain Rabbit RecAb (98723-2-RR, Clone: 251497D8) or Rabbit IgG Isotype Control Recombinant Antibody (98136-1-RR, Clone: 240953C9), and PE-Conjugated Goat Anti-Rabbit IgG(H+L). Cells were then stained with Coralite® Plus 750 Anti-Human CD19. The cells originate from CD11b-negative cells. Cells were incubated with FC Receptor Block prior to staining. Cells were not fixed.



1x10<sup>6</sup> human PBMCs were surface stained with 0.25 ug Anti-Human Ig Lambda Light Chain Rabbit RecAb (98723-2-RR, Clone: 251497D8) (red) or Rabbit IgG Isotype Control Recombinant Antibody (98136-1-RR, Clone: 240953C9) (blue), and PE-Conjugated Goat Anti-Rabbit IgG(H+L). The cells originate from CD11b-negative cells. Cells were incubated with FC Receptor Block prior to staining. Cells were not fixed.



Immunohistochemical analysis of paraffin-embedded human tonsillitis tissue slide using 98723-2-RR (Human Ig, λ Light Chain antibody) at dilution of 1:1000 (under 20x lens). Heat mediated antigen retrieval with Tris-EDTA buffer (pH 9.0).