

For Research Use Only

# Anti-Human IgG3 Rabbit Recombinant Antibody

Catalog Number: 98724-1-RR



## Basic Information

Catalog Number:

98724-1-RR

Size:

100ug, 1000 µg/ml

Source:

Rabbit

Isotype:

IgG

Immunogen Catalog Number:

EG6674

GenBank Accession Number:

GeneID (NCBI):

3502

Full Name:

immunoglobulin heavy constant gamma 3 (G3m marker)

Purification Method:

Protein A purification

CloneNo.:

251300H6

Recommended Dilutions:

FC: 0.25 ug per 10<sup>6</sup> cells in a 100 µl suspension

## Applications

Tested Applications:

FC

Species Specificity:

human

Positive Controls:

FC : human PBMCs,

## Storage

Storage:

Store at 2 - 8°C. Stable for one year after shipment.

Storage Buffer:

PBS with 0.09% sodium azide, pH7.3

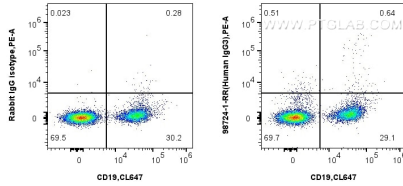
For technical support and original validation data for this product please contact:

T: 1 (888) 4PTGLAB (1-888-478-4522) (toll free in USA), or 1(312) 455-8498 (outside USA)

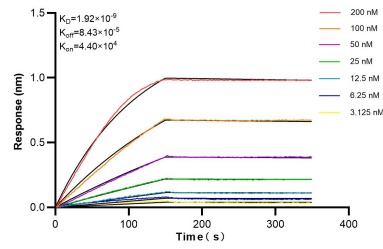
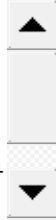
E: [proteintech@ptglab.com](mailto:proteintech@ptglab.com)  
W: [ptglab.com](http://ptglab.com)

This product is exclusively available under Proteintech Group brand and is not available to purchase from any other manufacturer.

## Selected Validation Data



$1 \times 10^6$  human PBMCs were surface stained with 0.25  $\mu$ g Anti-Human IgG3 Rabbit RecAb (98724-1-RR, Clone: 251300H6) or 0.25  $\mu$ g Rabbit IgG Isotype Control Recombinant Antibody (98136-1-RR, Clone: 240953C9), and PE-Conjugated Goat Anti-Rabbit IgG(H+L). Cells were then stained with CoraLite® Plus 647 Anti-Human CD19 (4G7) Mouse IgG2a Recombinant Antibody (CL647-65562, Clone: 4G7). The cells originate from CD11b-negative cells. Cells were incubated



Biolayer interferometry (BLI) kinetic assays of 98724-1-RR against Human IgG3 were performed. The affinity constant is 1.92 nM.