

For Research Use Only

Anti-Human CD179b Rabbit Recombinant Antibody

Catalog Number: 98738-2-RR



Basic Information

Catalog Number:

98738-2-RR

Size:

100ug, 1000 µg/ml

Source:

Rabbit

Isotype:

IgG

Immunogen Catalog Number:

EG3515

GenBank Accession Number:

BC012293

GeneID (NCBI):

3543

UNIPROT ID:

P15814

Full Name:

immunoglobulin lambda-like

polypeptide 1

Calculated MW:

213 aa, 23 kDa

Purification Method:

Protein A purification

CloneNo.:

252001D6

Recommended Dilutions:

FC: 0.25 ug per 10⁶ cells in a 100 µl suspension

Applications

Tested Applications:

FC

Species Specificity:

human

Positive Controls:

FC : NALM-6 cells,

Background Information

CD179b, also known as IGLL1, VpreB (surrogate light chain, VpreB1), is a crucial protein component of the pre-B cell receptor (pre-BCR), which is essential for the early development of B lymphocytes (B cells) in the bone marrow.

Storage

Storage:

Store at 2 - 8°C. Stable for one year after shipment.

Storage Buffer:

PBS with 0.09% sodium azide, pH7.3

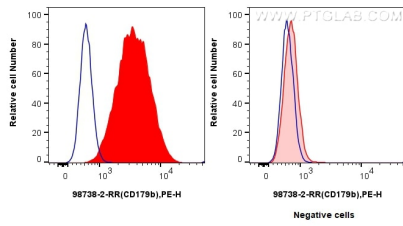
For technical support and original validation data for this product please contact:

T: 1 (888) 4PTGLAB (1-888-478-4522) (toll free in USA), or 1(312) 455-8498 (outside USA)

E: proteintech@ptglab.com
W: ptglab.com

This product is exclusively available under Proteintech Group brand and is not available to purchase from any other manufacturer.

Selected Validation Data



1x10⁶ NALM-6 cells (left) or REH cells (right) were surface stained with 0.25 ug Anti-Human CD179b Rabbit RecAb (98738-2-RR, Clone: 252001D6) (red) or Rabbit IgG Isotype Control Recombinant Antibody (98136-1-RR, Clone: 240953C9) (blue), and PE-conjugated Goat Anti-Rabbit IgG. Cells were not fixed.