

For Research Use Only

# Anti-Human EPHA1 Rabbit Recombinant Antibody, PBS Only

Catalog Number: 98743-2-PBS



## Basic Information

<b>Catalog Number:</b> 98743-2-PBS	<b>GenBank Accession Number:</b> NM_005232.4	<b>Purification Method:</b> Protein A purification
<b>Size:</b> 1mg, 3 mg/ml	<b>GeneID (NCBI):</b> 2041	<b>CloneNo.:</b> 252393C12
<b>Source:</b> Rabbit	<b>UNIPROT ID:</b> P21709-1	
<b>Isotype:</b> IgG	<b>Full Name:</b> EPH receptor A1	
<b>Immunogen Catalog Number:</b> EG5474	<b>Calculated MW:</b> 108 kDa	

## Applications

**Tested Applications:**  
FC

**Species Specificity:**  
human

## Background Information

EPHA1, also named as EPH, EPHT and EPHT1, belongs to ephrin receptor subfamily of the protein-tyrosine kinase family. EPH and EPH-related receptors have been implicated in mediating developmental events, particularly in the nervous system. Receptors in the EPH subfamily typically have a single kinase domain and an extracellular region containing a Cys-rich domain and 2 fibronectin type III repeats. Ligands in the ephrin-A subclass, including the prototype family member ephrin-A1 (B61), are membrane associated through glycosylphosphatidyl-inositol linkages, whereas ephrin-B subclass consists of ligands with transmembrane domains. The general role of the Eph family is in mediating repulsive cell-cell interaction.

## Storage

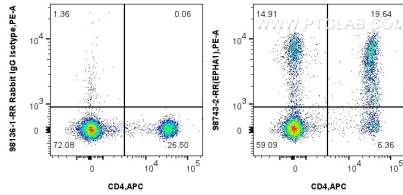
**Storage:**  
Store at -80°C.

**Storage Buffer:**  
PBS only, pH7.3

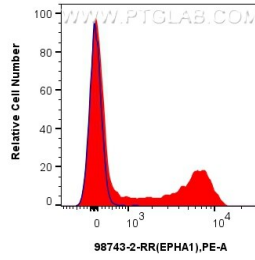
For technical support and original validation data for this product please contact:  
T: 1 (888) 4PTGLAB (1-888-478-4522) (toll free in USA), or 1(312) 455-8498 (outside USA)      E: proteintech@ptglab.com  
W: ptglab.com

This product is exclusively available under Proteintech Group brand and is not available to purchase from any other manufacturer.

## Selected Validation Data



1x10<sup>6</sup> human PBMCs were surface stained with 0.25 ug Anti-Human EPHA1 Rabbit RecAb (98743-2-RR, Clone: 252393C12) or 0.25 ug Rabbit IgG Isotype Control Recombinant Antibody (98136-1-RR, Clone: 240953C9), and PE-Conjugated Goat Anti-Rabbit IgG(H+L). Cells were then stained with APC Anti-Human CD4. Cells were not fixed. This data was developed using the same antibody clone with 98743-2-PBS in a different storage buffer formulation.



1x10<sup>6</sup> human PBMCs were surface stained with 0.25 ug Anti-Human EPHA1 Rabbit RecAb (98743-2-RR, Clone: 252393C12) (red) or 0.25 ug Rabbit IgG Isotype Control Recombinant Antibody (98136-1-RR, Clone: 240953C9) (blue), and PE-Conjugated Goat Anti-Rabbit IgG(H+L). Cells were not fixed. This data was developed using the same antibody clone with 98743-2-PBS in a different storage buffer formulation.