

For Research Use Only

Anti-Human EPHA1 Rabbit Recombinant Antibody

Catalog Number: 98743-2-RR



Basic Information

Catalog Number:

98743-2-RR

Size:

100ug, 1000 µg/ml

Source:

Rabbit

Isotype:

IgG

Immunogen Catalog Number:

EG5474

GenBank Accession Number:

NM_005232.4

GeneID (NCBI):

2041

UNIPROT ID:

P21709-1

Full Name:

EPH receptor A1

Calculated MW:

108 kDa

Purification Method:

Protein A purification

CloneNo.:

252393C12

Recommended Dilutions:

FC: 0.25 ug per 10⁶ cells in a 100 µl suspension

Applications

Tested Applications:

FC

Species Specificity:

human

Positive Controls:

FC : human PBMCs,

Background Information

EPHA1, also named as EPH, EPHT and EPHT1, belongs to ephrin receptor subfamily of the protein-tyrosine kinase family. EPH and EPH-related receptors have been implicated in mediating developmental events, particularly in the nervous system. Receptors in the EPH subfamily typically have a single kinase domain and an extracellular region containing a Cys-rich domain and 2 fibronectin type III repeats. Ligands in the ephrin-A subclass, including the prototype family member ephrin-A1 (B61), are membrane associated through glycosylphosphatidyl-inositol linkages, whereas ephrin-B subclass consists of ligands with transmembrane domains. The general role of the Eph family is in mediating repulsive cell-cell interaction.

Storage

Storage:

Store at 2 - 8°C. Stable for one year after shipment.

Storage Buffer:

PBS with 0.09% sodium azide, pH7.3

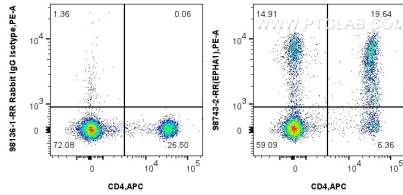
For technical support and original validation data for this product please contact:

T: 1 (888) 4PTGLAB (1-888-478-4522) (toll free in USA), or 1(312) 455-8498 (outside USA)

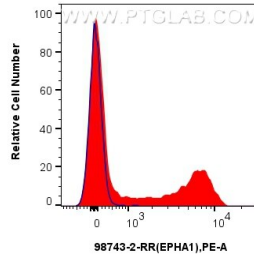
E: proteintech@ptglab.com
W: ptglab.com

This product is exclusively available under Proteintech Group brand and is not available to purchase from any other manufacturer.

Selected Validation Data



1x10⁶ human PBMCs were surface stained with 0.25 ug Anti-Human EPHA1 Rabbit RecAb (98743-2-RR, Clone: 252393C12) or 0.25 ug Rabbit IgG Isotype Control Recombinant Antibody (98136-1-RR, Clone: 240953C9), and PE-Conjugated Goat Anti-Rabbit IgG(H+L). Cells were then stained with APC Anti-Human CD4. Cells were not fixed.



1x10⁶ human PBMCs were surface stained with 0.25 ug Anti-Human EPHA1 Rabbit RecAb (98743-2-RR, Clone: 252393C12) (red) or 0.25 ug Rabbit IgG Isotype Control Recombinant Antibody (98136-1-RR, Clone: 240953C9) (blue), and PE-Conjugated Goat Anti-Rabbit IgG(H+L). Cells were not fixed.