

For Research Use Only

# Anti-Human CCR4 Rabbit Recombinant Antibody

Catalog Number: 98745-1-RR



## Basic Information

Catalog Number:

98745-1-RR

Size:

100ug , 1000 µg/ml

Source:

Rabbit

Isotype:

IgG

GenBank Accession Number:

GeneID (NCBI):

1233

UNIPROT ID:

P51679

Full Name:

chemokine (C-C motif) receptor 4

Purification Method:

Protein A purification

CloneNo.:

253520A1

Recommended Dilutions:

FC: 0.25 ug per 10<sup>6</sup> cells in a 100 µl suspension

## Applications

Tested Applications:

FC

Species Specificity:

human

Positive Controls:

FC : human PBMCs,

## Background Information

CC chemokine receptor 4 (CCR4) is important for regulating immune balance and is known to be expressed selectively on Th2 cells and Treg cells. Expression of CCR4 by tumor cells is associated with skin involvement, but CCR4 also has an important role in normal and tumor immunity (PMID: 16952304). CCR4+ adult T-cell leukemia/lymphoma is an example of the former phenomenon, and Hodgkin lymphoma of the latter, for which an almost identical immunopathogenesis has been reported in many types of cancer (PMID: 21044233, 12485447).

## Storage

Storage:

Store at 2 - 8°C. Stable for one year after shipment.

Storage Buffer:

PBS with 0.09% sodium azide, pH7.3

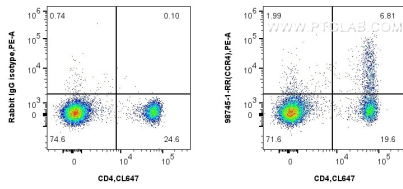
For technical support and original validation data for this product please contact:

T: 1 (888) 4PTGLAB (1-888-478-4522) (toll free in USA), or 1(312) 455-8498 (outside USA)

E: [proteintech@ptglab.com](mailto:proteintech@ptglab.com)  
W: [ptglab.com](http://ptglab.com)

**This product is exclusively available under Proteintech Group brand and is not available to purchase from any other manufacturer.**

## Selected Validation Data



1x10<sup>6</sup> human PBMCs were surface stained with 0.25 ug Anti-Human CCR4 Rabbit RecAb (98745-1-RR, Clone:253520A1) and PE-Conjugated Goat Anti-Rabbit IgG(H+L), and 0.25 ug Rabbit IgG Isotype Control RecAb (98136-1-RR, Clone: 240953C9). Cells were then stained with Coralite® Plus 647 Anti-Human CD4 Rabbit Recombinant Antibody (CL647-98042, Clone: 240427E12). Cells were not fixed. Lymphocytes were gated.