

For Research Use Only

Anti-Human HLA class II Rabbit Recombinant Antibody

Catalog Number: 98748-1-RR



Basic Information

Catalog Number:

98748-1-RR

Size:

100ug , 1000 µg/ml

Source:

Rabbit

Isotype:

IgG

GenBank Accession Number:

GeneID (NCBI):

Full Name:

Purification Method:

Protein A purification

CloneNo.:

253538A1

Recommended Dilutions:

FC: 0.25 ug per 10⁶ cells in a 100 µl suspension

Applications

Tested Applications:

FC

Species Specificity:

human

Positive Controls:

FC : human PBMCs,

Background Information

Human major histocompatibility complex (MHC) antigens, also referred to as human leukocyte antigens (HLA), are encoded by genes located on the short arm of chromosome 6 (6p21.3). There are two classes of HLA antigens: class I (HLA-A, B and C) and class II (HLA-D). This class I molecules are polymorphic membrane glycoproteins composed of a heavy (alpha) chain (44 kDa) which is encoded by a HLA class I gene (HLA-A, B or C), and β2-microglobulin light (beta) chain (12 kDa). They are involved in the presentation of foreign antigens to the immune system (PMID: 667938; 3375250). This antibody can recognize HLA-DR, -DP, and -DQ.

Storage

Storage:

Store at 2 - 8°C. Stable for one year after shipment.

Storage Buffer:

PBS with 0.09% sodium azide, pH7.3

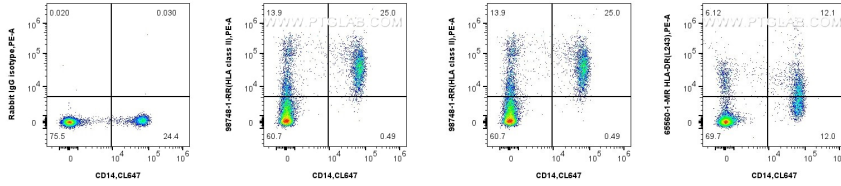
For technical support and original validation data for this product please contact:

T: 1 (888) 4PTGLAB (1-888-478-4522) (toll free in USA), or 1(312) 455-8498 (outside USA)

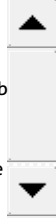
E: proteintech@ptglab.com
W: ptglab.com

This product is exclusively available under Proteintech Group brand and is not available to purchase from any other manufacturer.

Selected Validation Data



1x10⁶ human PBMCs were surface stained with 0.25 ug Anti-Human HLA class II Rabbit RecAb (98748-1-RR, Clone:253538A1) and PE-Conjugated Goat Anti-Rabbit IgG(H+L), and 0.25 ug Rabbit IgG Isotype Control RecAb (98136-1-RR, Clone: 240953C9). Cells were then stained with CoraLite® Plus 647 Anti-Human CD14 Rabbit Recombinant Antibody (CL647-98040, Clone: 230332D7). Cells were incubated with FC Receptor Block prior to staining. Cells were not fixed.



1x10⁶ human PBMCs were surface stained with 0.25 ug Anti-Human HLA class II Rabbit RecAb (98748-1-RR, Clone:253538A1) and PE-Conjugated Goat Anti-Rabbit IgG(H+L), and 0.25 ug Anti-Human HLA-DR (L243) Mouse IgG2a Recombinant Antibody (65560-1-MR, Clone: L243). Cells were then stained with CoraLite® Plus 647 Anti-Human CD14 Rabbit Recombinant Antibody (CL647-98040, Clone: 230332D7). Cells were incubated with FC Receptor Block prior to staining. Cells

