

For Research Use Only

Anti-Human IgG1 Rabbit Recombinant Antibody

Catalog Number: 98804-3-RR



Basic Information

Catalog Number:

98804-3-RR

Size:

100ug , 1000 µg/ml

Source:

Rabbit

Isotype:

IgG

Immunogen Catalog Number:

EG6672

GenBank Accession Number:

GeneID (NCBI):

3500

Full Name:

immunoglobulin heavy constant
gamma 1 (G1m marker)

Purification Method:

Protein A purification

CloneNo.:

251296E10

Recommended Dilutions:

IHC: 1:500-1:2000

FC: 0.25 µg per 10⁶ cells in a 100 µl
suspension

Applications

Tested Applications:

IHC, FC

Species Specificity:

human

**Note-IHC: suggested antigen retrieval with
TE buffer pH 9.0; (*) Alternatively, antigen
retrieval may be performed with citrate
buffer pH 6.0**

Positive Controls:

IHC : human tonsillitis tissue,

FC : human PBMCs,

Background Information

Human Immunoglobulin G subclass 1 (IgG1) is the most abundant antibody subclass in human serum, constituting approximately 60-70% of total IgG. It serves as a critical mediator of the adaptive immune system's defense against pathogens. Human IgG1 represents a perfect balance of specificity, stability, and powerful immune-activating capacity. Its dominance in the biotherapeutic landscape is a testament to its versatility and effectiveness. This antibody does not recognize IgA2.

Storage

Storage:

Store at 2 - 8°C. Stable for one year after shipment.

Storage Buffer:

PBS with 0.09% sodium azide, pH7.3

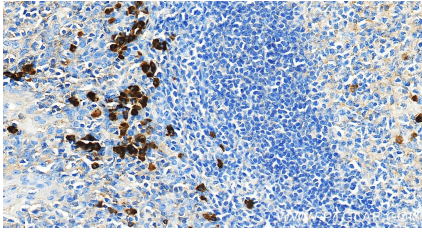
For technical support and original validation data for this product please contact:

T: 1 (888) 4PTGLAB (1-888-478-4522) (toll free
in USA), or 1(312) 455-8498 (outside USA)

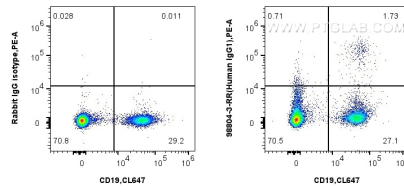
E: proteintech@ptglab.com
W: ptglab.com

**This product is exclusively available under Proteintech
Group brand and is not available to purchase from any
other manufacturer.**

Selected Validation Data



Immunohistochemical analysis of paraffin-embedded human tonsillitis tissue slide using 98721-9-RR (Human IgG1 antibody) at dilution of 1:1000 (under 20x lens). Heat mediated antigen retrieval with Tris-EDTA buffer (pH 9.0).



1x10⁶ human PBMCs were stained with 0.25 ug Anti-Human Human IgG1 Rabbit RecAb (98804-3-RR, Clone: 251296E10) or 0.25 ug Rabbit IgG Isotype Control Recombinant Antibody (98136-1-RR, Clone: 240953C9), and PE-Conjugated Goat Anti-Rabbit IgG(H+L). Cells were then stained with CoraLite® Plus 647 Anti-Human CD19 (4G7) Mouse IgG2a Recombinant Antibody (CL647-65562, Clone: 4G7). The cells originate from CD11b-negative cells. Cells

