

For Research Use Only

# Anti-Mouse NK1.1 (CD161) Rabbit Recombinant Antibody, PBS Only

Catalog Number: 98820-1-PBS



## Basic Information

<b>Catalog Number:</b> 98820-1-PBS	<b>GenBank Accession Number:</b> NM_001159904	<b>Purification Method:</b> Protein A purification
<b>Size:</b> 1mg, 3 mg/ml	<b>GeneID (NCBI):</b> 17059	<b>CloneNo.:</b> 253074D6
<b>Source:</b> Rabbit	<b>UNIPROT ID:</b> P27814	
<b>Isotype:</b> IgG	<b>Full Name:</b> killer cell lectin-like receptor subfamily B member 1C	
<b>Immunogen Catalog Number:</b> EG6938	<b>Calculated MW:</b> 25KD	

## Applications

**Tested Applications:**  
FC

**Species Specificity:**  
mouse

## Background Information

NK1.1 (CD161), also known as KLRB1 or NKR-P1A, is a type II transmembrane C-type lectin-like receptor and is expressed on the cell membrane as disulfide-linked homodimer (PMID: 8077657). It is expressed by the majority of NK cells and subsets of peripheral T cells, including both CD4+ and CD8+ T cells, and is expressed preferentially on adult T cells with a "memory" antigenic phenotype (PMID: 8077657; 22566826). Expression of CD161 correlates with the cytotoxic function of CD16+ NK cells, and ligation of CD161 with its ligand LLT1 inhibits NK cell cytotoxicity and cytokine secretion (PMID: 29686665).

## Storage

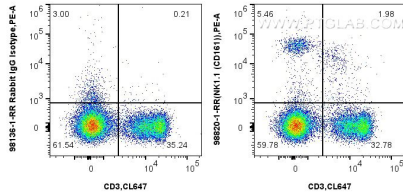
**Storage:**  
Store at -80°C.

**Storage Buffer:**  
PBS only, pH7.3

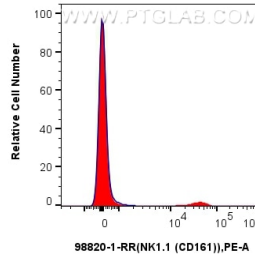
For technical support and original validation data for this product please contact:  
T: 1 (888) 4PTGLAB (1-888-478-4522) (toll free in USA), or 1(312) 455-8498 (outside USA)      E: [proteintech@ptglab.com](mailto:proteintech@ptglab.com)  
W: [ptglab.com](http://ptglab.com)

This product is exclusively available under Proteintech Group brand and is not available to purchase from any other manufacturer.

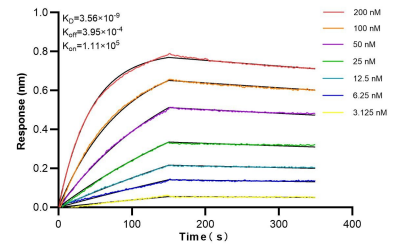
## Selected Validation Data



1x10<sup>6</sup> mouse splenocytes were surface stained with 0.25 ug Anti-Mouse NK1.1 (CD161) Rabbit RecAb (98820-1-RR, Clone: 253074D6) or 0.25 ug Rabbit IgG Isotype Control Recombinant Antibody (98136-1-RR, Clone: 240953C9), and PE-Conjugated Goat Anti-Rabbit IgG(H+L). Cells were then stained with CoraLite® Plus 647 Anti-Mouse CD3. Cells were not fixed. This data was developed using the same antibody clone with 98820-1-PBS in a different storage



1x10<sup>6</sup> mouse splenocytes were surface stained with 0.25 ug Anti-Mouse NK1.1 (CD161) Rabbit RecAb (98820-1-RR, Clone: 253074D6) or 0.25 ug Rabbit IgG Isotype Control Recombinant Antibody (98136-1-RR, Clone: 240953C9), and PE-Conjugated Goat Anti-Rabbit IgG(H+L). Cells were not fixed. This data was developed using the same antibody clone with 98820-1-PBS in a different storage buffer formulation.



Biolayer interferometry (BLI) kinetic assays of 98820-1-RR against Mouse NK1.1 (CD161) were performed. The affinity constant is 3.56 nM.