

For Research Use Only

Anti-Mouse NK1.1 (CD161) Rabbit Recombinant Antibody

Catalog Number: 98820-1-RR



Basic Information

Catalog Number:

98820-1-RR

Size:

100ug, 1000 µg/ml

Source:

Rabbit

Isotype:

IgG

Immunogen Catalog Number:

EG6938

GenBank Accession Number:

NM_001159904

GeneID (NCBI):

17059

UNIPROT ID:

P27814

Full Name:

killer cell lectin-like receptor
subfamily B member 1C

Calculated MW:

25KD

Purification Method:

Protein A purification

CloneNo.:

253074D6

Recommended Dilutions:

FC: 0.25 ug per 10⁶ cells in a 100 µl
suspension

Applications

Tested Applications:

FC

Species Specificity:

mouse

Positive Controls:

FC : mouse splenocytes,

Background Information

NK1.1 (CD161), also known as KLRB1 or NKR-P1A, is a type II transmembrane C-type lectin-like receptor and is expressed on the cell membrane as disulfide-linked homodimer (PMID: 8077657). It is expressed by the majority of NK cells and subsets of peripheral T cells, including both CD4+ and CD8+ T cells, and is expressed preferentially on adult T cells with a "memory" antigenic phenotype (PMID: 8077657; 22566826). Expression of CD161 correlates with the cytotoxic function of CD16+ NK cells, and ligation of CD161 with its ligand LLT1 inhibits NK cell cytotoxicity and cytokine secretion (PMID: 29686665).

Storage

Storage:

Store at 2 - 8°C. Stable for one year after shipment.

Storage Buffer:

PBS with 0.09% sodium azide, pH7.3

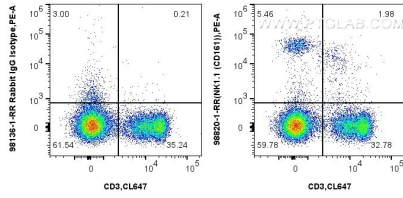
For technical support and original validation data for this product please contact:

T: 1 (888) 4PTGLAB (1-888-478-4522) (toll free
in USA), or 1(312) 455-8498 (outside USA)

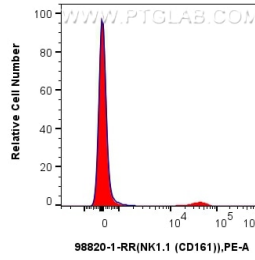
E: proteintech@ptglab.com
W: ptglab.com

This product is exclusively available under Proteintech Group brand and is not available to purchase from any other manufacturer.

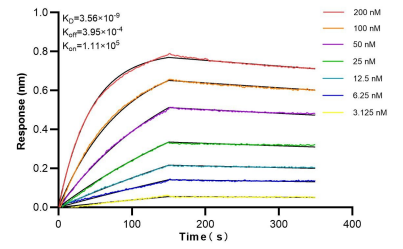
Selected Validation Data



1x10⁶ mouse splenocytes were surface stained with 0.25 ug Anti-Mouse NK1.1 (CD161) Rabbit RecAb (98820-1-RR, Clone: 253074D6) or 0.25 ug Rabbit IgG Isotype Control Recombinant Antibody (98136-1-RR, Clone: 240953C9), and PE-Conjugated Goat Anti-Rabbit IgG(H+L). Cells were then stained with CoraLite® Plus 647 Anti-Mouse CD3. Cells were not fixed.



1x10⁶ mouse splenocytes were surface stained with 0.25 ug Anti-Mouse NK1.1 (CD161) Rabbit RecAb (98820-1-RR, Clone: 253074D6) (red) or 0.25 ug Rabbit IgG Isotype Control Recombinant Antibody (98136-1-RR, Clone: 240953C9) (blue), and PE-Conjugated Goat Anti-Rabbit IgG(H+L). Cells were not fixed.



Bilayer interferometry (BLI) kinetic assays of 98820-1-RR against Mouse NK1.1 (CD161) were performed. The affinity constant is 3.56 nM.