

For Research Use Only

# Atlantic Blue™ Anti-Human CD42b (AK2)



Catalog Number: AB-65163

## Basic Information

<b>Catalog Number:</b> AB-65163	<b>GenBank Accession Number:</b> BC027955	<b>Purification Method:</b> Purified by protein-A affinity chromatography
<b>Size:</b> 100tests , 5 µl/test	<b>GeneID (NCBI):</b> 2811	<b>CloneNo.:</b> AK2
<b>Source:</b> Mouse	<b>Full Name:</b> glycoprotein Ib (platelet), alpha polypeptide	<b>Excitation/Emission maxima wavelengths:</b> 401 nm / 452 nm
<b>Isotype:</b> IgG1	<b>Calculated MW:</b> 626 aa, 69 kDa	

## Applications

**Tested Applications:**  
FC

**Species Specificity:**  
Human

## Background Information

CD42b, also known as platelet glycoprotein Ib alpha chain (GPIb alpha), is a type I transmembrane glycoprotein of 135-145 kDa (PMID: 2656709). It is expressed on platelets and megakaryocytes. CD42b and CD42c (GPIb beta) are linked by a disulphide bond to form GPIb (PMID: 7660135). GPIb forms a noncovalent complex with CD42a (GPIX) and CD42d (GPV) and acts as a receptor for von Willebrand factor (vWF) and thrombin (PMID: 7660135; 3759960). The GPIb-V-IX complex mediates vWF-dependent platelet adhesion to blood vessels. Defects in the expression of CD42b result in Bernard-Soulier syndromes and platelet-type von Willebrand disease (PMID: 9371310).

## Storage

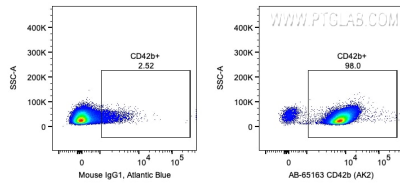
**Storage:**  
Store at 2-8°C. Avoid exposure to light. Stable for one year after shipment.

**Storage Buffer:**  
PBS with 0.09% sodium azide and 0.5% BSA.

For technical support and original validation data for this product please contact:  
T: 1 (888) 4PTGLAB (1-888-478-4522) (toll free in USA), or 1(312) 455-8498 (outside USA)      E: proteintech@ptglab.com  
W: ptglab.com

**This product is exclusively available under Proteintech Group brand and is not available to purchase from any other manufacturer.**

## Selected Validation Data



1X10<sup>6</sup> human peripheral blood platelets were surface stained with 5 ul Atlantic Blue™ Anti-Human CD42b (AB-65163, Clone:AK2) or Mouse IgG1 Isotype Control. Cells were not fixed.