

For Research Use Only

# Atlantic Blue™ Anti-Human CD35 (E11)



Catalog Number: **AB-65254**

## Basic Information

<b>Catalog Number:</b> AB-65254	<b>GenBank Accession Number:</b> NM_000573	<b>Purification Method:</b> Affinity purification
<b>Size:</b> 100tests , 5 µl/test	<b>GeneID (NCBI):</b> 1378	<b>CloneNo.:</b> E11
<b>Source:</b> Mouse	<b>Full Name:</b> complement component (3b/4b) receptor 1 (Knops blood group)	<b>Excitation/Emission maxima wavelengths:</b> 404 nm / 458 nm
<b>Isotype:</b> IgG1, kappa	<b>Calculated MW:</b> 224 kDa	

## Applications

**Tested Applications:**  
FC

**Species Specificity:**  
Human

## Background Information

CD35, also known as complement receptor type 1 (CR1) or C3b/C4b receptor, is a single-chain glycoprotein consisting of 30 repeating homologous protein domains known as short consensus repeats (~60 amino acids each) followed by transmembrane and cytoplasmic domains (PMID: 8765013). CD35 is variably expressed by granulocytes, monocytes, B cells, some T cells, erythrocytes, follicular dendritic cells, Langerhans cells, and glomerular podocytes (PMID: 19004497). CD35 acts as a receptor for C3b and C4b and plays important roles in the regulation of the complement cascade and clearance of immune complexes.

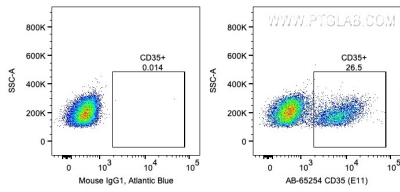
## Storage

**Storage:**  
Store at 2-8°C. Avoid exposure to light. Stable for one year after shipment.  
**Storage Buffer:**  
PBS with 0.09% sodium azide and 0.5% BSA.

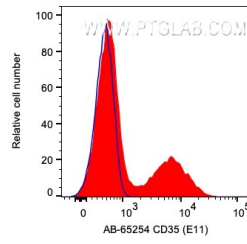
For technical support and original validation data for this product please contact:  
T: 1 (888) 4PTGLAB (1-888-478-4522) (toll free in USA), or 1(312) 455-8498 (outside USA)  
E: [proteintech@ptglab.com](mailto:proteintech@ptglab.com)  
W: [ptglab.com](http://ptglab.com)

This product is exclusively available under Proteintech Group brand and is not available to purchase from any other manufacturer.

## Selected Validation Data



1X10<sup>6</sup> human PBMCs were surface stained with 5 ul Atlantic Blue™ Anti-Human CD35 (AB-65254, Clone:E11) or 5 ul Mouse IgG1 Isotype Control. Cells were not fixed. Lymphocytes were gated.



1X10<sup>6</sup> human PBMCs were surface stained with 5 ul Atlantic Blue™ Anti-Human CD35 (AB-65254, Clone:E11) or 5 ul Mouse IgG1 Isotype Control. Cells were not fixed. Lymphocytes were gated.