

For Research Use Only

Atlantic Blue™ Anti-Human CD244 (2B4.69)



Catalog Number: **AB-65270**

Basic Information

Catalog Number: AB-65270	GenBank Accession Number: BC028073	Purification Method: Affinity purification
Size: 100tests , 5 ul/test	GeneID (NCBI): 51744	CloneNo.: 2B4.69
Source: Mouse	Full Name: CD244 molecule, natural killer cell receptor 2B4	Excitation/Emission maxima wavelengths: 404 nm / 458 nm
Isotype: IgG1		

Applications

Tested Applications:
FC

Species Specificity:
Human

Background Information

CD244, also known as SLAMF4 or 2B4, is a type I transmembrane glycoprotein belonging to the signaling lymphocyte activation molecule (SLAM) family. It consists of an extracellular segment with two immunoglobulin (Ig)-like domains, a transmembrane region, and a cytoplasmic domain containing tyrosine-based motifs (PMID: 9841922; 30546369). CD244 is present on natural killer (NK) cells, $\gamma\delta$ T cells, a subset of CD8+ T cells, monocytes, basophils, dendritic cells, and myeloid-derived suppressor cells (MDSCs) (PMID: 30546369). It binds to CD48 with high affinity and transmits stimulatory or inhibitory signals that regulate immune function (PMID: 9841922; 18523281).

Storage

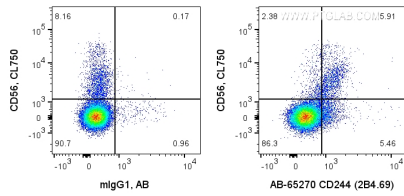
Storage:
Store at 2-8°C. Avoid exposure to light. Stable for one year after shipment.

Storage Buffer:
PBS with 0.09% sodium azide and 0.5% BSA.

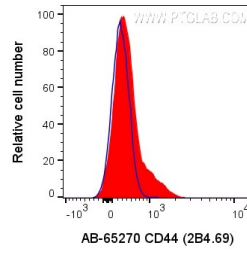
For technical support and original validation data for this product please contact:
T: 1 (888) 4PTGLAB (1-888-478-4522) (toll free in USA), or 1(312) 455-8498 (outside USA) E: proteintech@ptglab.com
W: ptglab.com

This product is exclusively available under Proteintech Group brand and is not available to purchase from any other manufacturer.

Selected Validation Data



1X10⁶ human PBMCs were surface co-stained with CL750 Anti-Human CD56 and 5 ul Atlantic Blue™ Anti-Human CD244 (AB-65270, Clone:2B4.69), or Mouse IgG1 Isotype Control. Cells were not fixed. Lymphocytes were gated.



1X10⁶ human PBMCs were surface stained with 5 ul Atlantic Blue™ Anti-Human CD244 (AB-65270, Clone:2B4.69), or Mouse IgG1 Isotype Control. Cells were not fixed. Lymphocytes were gated.