

# APC Anti-Human CD3 (Hit3a)

Catalog Number: **APC-65112**

## Basic Information

**Catalog Number:**

APC-65112

**Size:**

100 tests, 5 µl/test

**Source:**

Mouse

**Isotype:**

IgG2a, kappa

**GenBank Accession Number:**

BC049847

**GeneID (NCBI):**

916

**ENSEMBL Gene ID:**

ENSG00000198851

**UNIPROT ID:**

P07766

**Full Name:**

CD3e molecule, epsilon (CD3-TCR complex)

**Calculated MW:**

207 aa, 23 kDa

**Purification Method:**

Affinity purification

**CloneNo.:**

Hit3a

**Excitation/Emission maxima wavelengths:**

650 nm / 660 nm

## Applications

**Tested Applications:**

FC

**Species Specificity:**

Human

## Background Information

CD3 is a multimeric protein associated with the T-cell receptor (TCR) to form a complex involved in antigen recognition and signal transduction (PMID: 15885124). CD3 is composed of CD3γ, δ, ε, and ζ chains (PMID: 1826255). It is expressed by thymocytes in a developmentally regulated manner, T cells, and some NK cells (PMID: 3289580). The TCR recognizes antigens bound to major histocompatibility complex (MHC) molecules. TCR-mediated peptide-MHC recognition is transmitted to the CD3 complex, leading to the intracellular signal transduction (PMID: 11985657).

## Storage

**Storage:**

Store at 2-8°C. Avoid exposure to light. Stable for one year after shipment.

**Storage Buffer:**

Phosphate based buffer with 0.09% sodium azide and 0.1% gelatin, pH 7.2.

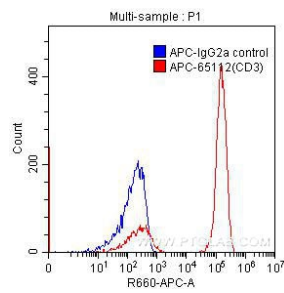
For technical support and original validation data for this product please contact:

T: 1 (888) 4PTGLAB (1-888-478-4522) (toll free in USA), or 1(312) 455-8498 (outside USA)

E: [proteintech@ptglab.com](mailto:proteintech@ptglab.com)  
W: [ptglab.com](http://ptglab.com)

This product is exclusively available under Proteintech Group brand and is not available to purchase from any other manufacturer.

## Selected Validation Data



1X10<sup>6</sup> human peripheral blood lymphocytes were surface stained with 0.25 ug APC-anti-human CD3 (APC-65112, clone Hit3a) (red) or 0.25 ug APC-mouse IgG2a isotype control (blue). Cells were not fixed.