

For Research Use Only

# APC Mouse IgG1, $\kappa$ Isotype Control Recombinant Antibody

Catalog Number: APC-98742



## Basic Information

Catalog Number:

APC-98742

Size:

100ug , 200 ug/ml

Source:

Mouse

Isotype:

IgG1

GenBank Accession Number:

GeneID (NCBI):

Full Name:

Purification Method:

Protein A purification

CloneNo.:

253504A1

Recommended Dilutions:

FC: 0.1 ug per  $10^6$  cells in a 100  $\mu$ l suspension

Excitation/Emission maxima wavelengths:

650 nm / 660 nm

## Applications

Tested Applications:

FC

Species Specificity:

n/a

Positive Controls:

FC : human PBMCs, rat splenocytes

## Background Information

This product is an isotype control antibody, which is used to estimate the non-specific binding of target primary antibodies due to Fc receptor binding or other protein-protein interactions. An isotype control antibody should have the same immunoglobulin type and be used at the same concentration as the test antibody.

## Storage

Storage:

Store at 2-8°C. Avoid exposure to light. Stable for one year after shipment.

Storage Buffer:

PBS with 0.09% sodium azide and 0.5% BSA, pH7.3

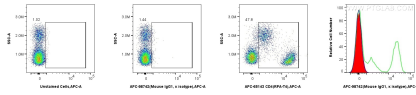
For technical support and original validation data for this product please contact:

T: 1 (888) 4PTGLAB (1-888-478-4522) (toll free in USA), or 1(312) 455-8498 (outside USA)

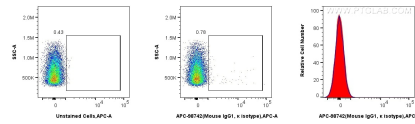
E: [proteintech@ptglab.com](mailto:proteintech@ptglab.com)  
W: [ptglab.com](http://ptglab.com)

This product is exclusively available under Proteintech Group brand and is not available to purchase from any other manufacturer.

## Selected Validation Data



1x10<sup>6</sup> human PBMCs were surface stained with 0.1 ug APC Mouse IgG1, κ Isotype Control RecAb (APC-98742, Clone: 253504A1) (red in histogram), or 0.1 ug APC Anti-Human CD4 (RPA-T4) (APC-65143, Clone: RPA-T4) (green in histogram), or unstained (blue in histogram). Cells were incubated with FC Receptor Block prior to staining. Cells were not fixed.



1x10<sup>6</sup> rat splenocytes were surface stained with 0.1 ug APC Mouse IgG1, κ Isotype Control RecAb (APC-98742, Clone: 253504A1) (red in histogram) or unstained (blue in histogram). Cells were incubated with FC Receptor Block prior to staining. Cells were not fixed.