

For Research Use Only

# FcZero-rAb™ APC Anti-Human CD226 (11A8) Rabbit IgG Recombinant Antibody

Catalog Number: APC-FcA65573



## Basic Information

Catalog Number:

APC-FcA65573

Size:

100 tests, 5 µl/test

Source:

Rabbit

Isotype:

IgG

GenBank Accession Number:

BC074787

GeneID (NCBI):

10666

ENSEMBL Gene ID:

ENSG00000150637

Full Name:

CD226 molecule

Calculated MW:

336 aa, 39 kDa

Purification Method:

Protein A purification

CloneNo.:

11A8

Excitation/Emission maxima

wavelengths:

650 nm / 660 nm

## Applications

Tested Applications:

FC

Species Specificity:

human

## Background Information

CD226 (DNAM-1) is a ~65 kDa glycoprotein expressed on the surface of NK cells, platelets, monocytes and a subset of T cells. It is a member of the Ig-superfamily containing 2 Ig-like domains of the V-set. CD226 mediates cellular adhesion of platelets and megakaryocytic cells to vascular endothelial cells. The protein also plays a role in megakaryocytic cell maturation. Interactions of CD226 and its ligands, CD155 and CD112, induce NK and T cell-mediated cytotoxicity and cytokine secretion (PMID: 15039383).

## Storage

Storage:

Store at 2-8°C. Avoid exposure to light. Stable for one year after shipment.

Storage Buffer:

PBS with 0.09% sodium azide and 0.5% BSA.

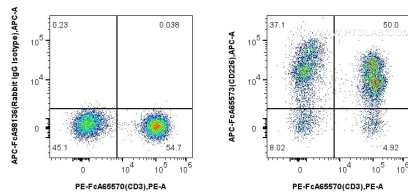
For technical support and original validation data for this product please contact:

T: 1 (888) 4PTGLAB (1-888-478-4522) (toll free in USA), or 1(312) 455-8498 (outside USA)

E: [proteintech@ptglab.com](mailto:proteintech@ptglab.com)  
W: [ptglab.com](http://ptglab.com)

This product is exclusively available under Proteintech Group brand and is not available to purchase from any other manufacturer.

## Selected Validation Data



1x10<sup>6</sup> human PBMCs were surface stained with FcZero-rAb™ PE Anti-Human CD3 (UCHT1), and 5 ul FcZero-rAb™ APC Anti-Human CD226 (11A8) Rabbit IgG RecAb (APC-FcA65573, Clone:11A8) or FcZero-rAb™ APC Rabbit IgG Isotype Control RecAb (APC-FcA98136, Clone: 240953C9). Cells were not fixed.