

For Research Use Only

FcZero-rAb™ APC Anti-Human L1CAM/CD171 Rabbit Recombinant Antibody

Catalog Number: APC-FcA98130



Basic Information

Catalog Number: APC-FcA98130	GenBank Accession Number: BC126229	Purification Method: Protein A purification
Size: 100tests , 5 ul/test	GeneID (NCBI): 3897	CloneNo.: 240978A7
Source: Rabbit	Full Name: L1 cell adhesion molecule	Excitation/Emission maxima wavelengths: 650 nm / 660 nm
Isotype: IgG	Calculated MW: 1257 aa, 140 kDa	
Immunogen Catalog Number: EG0209		

Applications

Tested Applications:
FC

Species Specificity:
human

Background Information

L1CAM, also known as NCAM-L1 or CD171, is a cell adhesion molecule of the immunoglobulin superfamily. It is a 200-220 kDa transmembrane glycoprotein composed of six Ig-like domains and five fibronectin type III repeats followed by a transmembrane region and a highly conserved cytoplasmic tail (PMID: 3412448; 22796939). L1CAM is primarily expressed in the nervous system and is involved in neuron-neuron adhesion, neurite fasciculation, outgrowth of neurites, cerebellar granule cell migration, neurite outgrowth on Schwann cells and interactions among epithelial cells of intestinal crypts (PMID: 3412448; 10767310). L1CAM is overexpressed in many human cancers and is often associated with bad prognosis (PMID: 27267927; 26111503).

Storage

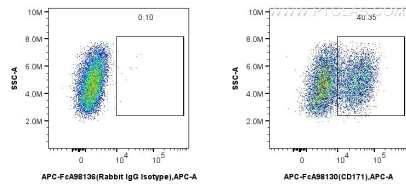
Storage:
Store at 2-8°C. Avoid exposure to light. Stable for one year after shipment.

Storage Buffer:
PBS with 0.09% sodium azide and 0.5% BSA, pH7.3

For technical support and original validation data for this product please contact:
T: 1 (888) 4PTGLAB (1-888-478-4522) (toll free in USA), or 1(312) 455-8498 (outside USA)
E: proteintech@ptglab.com
W: ptglab.com

This product is exclusively available under Proteintech Group brand and is not available to purchase from any other manufacturer.

Selected Validation Data



1x10⁶ SK-N-SH cells were surface stained with 5 ul APC Anti-Human L1CAM/CD171 Rabbit RecAb (APC-FcA98130, Clone:240978A7) or APC Rabbit IgG Isotype Control RecAb (APC-FcA98136, Clone: 240953C9). Cells were not fixed.