

For Research Use Only

# APC-Cyanine7 Anti-Human CD45 Rabbit Recombinant Antibody

Catalog Number: AY7-98117



## Basic Information

Catalog Number:

AY7-98117

Size:

100 tests, 5 µl/test

Source:

Rabbit

Isotype:

IgG

GenBank Accession Number:

GeneID (NCBI):

5788

ENSEMBL Gene ID:

ENSG00000081237

Full Name:

protein tyrosine phosphatase, receptor type, C

Purification Method:

Protein A purification

CloneNo.:

241670E10

Excitation/Emission maxima wavelengths:

650 nm / 778 nm

## Applications

Tested Applications:

FC

Species Specificity:

human

## Background Information

CD45, also known as protein tyrosine phosphatase, receptor type C, is a type I transmembrane protein expressed on the surface of all haematopoietic cells with the exception of erythrocytes and platelets (PMID: 3489673; 28615666). CD45 is a pan-haematopoietic cell marker and has been shown to be essential for T- and B-cell activation and signalling (PMID: 9429890; 16378097).

## Storage

Storage:

Store at 2-8°C. Avoid exposure to light. Stable for one year after shipment.

Storage Buffer:

PBS with 0.09% sodium azide and 0.5% BSA.

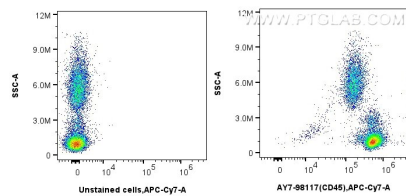
For technical support and original validation data for this product please contact:

T: 1 (888) 4PTGLAB (1-888-478-4522) (toll free in USA), or 1(312) 455-8498 (outside USA)

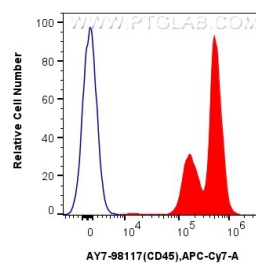
E: [proteintech@ptglab.com](mailto:proteintech@ptglab.com)  
W: [ptglab.com](http://ptglab.com)

This product is exclusively available under Proteintech Group brand and is not available to purchase from any other manufacturer.

## Selected Validation Data



1x10<sup>6</sup> human peripheral blood leukocytes were unstained or surface stained with 5 ul APC-Cyanine7 Anti-Human CD45 Rabbit Recombinant Antibody (AY7-98117, Clone: 241670E10). Cells were incubated with FC Receptor Block prior to staining. Cells were not fixed.



1x10<sup>6</sup> human peripheral blood leukocytes were unstained (blue) or surface stained with 5 ul APC-Cyanine7 Anti-Human CD45 Rabbit Recombinant Antibody (AY7-98117, Clone: 241670E10) (red). Cells were incubated with FC Receptor Block prior to staining. Cells were not fixed.