

FOR IN VITRO RESEARCH USE ONLY.  
NOT FOR USE IN HUMANS OR ANIMALS.

# Recombinant human MCRS1 protein



## Basic Information

**Catalog Number:**  
Ag1904

**Form:**  
Available lyophilized

**Species:**  
human

**Expression Source:**  
*e coli*-derived, PGEX-4T, with N-terminal GST.

**Biological Activity:**  
Not tested

**Endotoxin Level:**  
Please contact the lab for more information

**Peptide Sequence:**  
MDKDSQGLLDSSLMASGTASRSEDEESLAGQKRASS  
QALGTIPKRRSSRFIKRKKFDDELVESSLAKSSTRAGK  
ASGVEPGRCSGSEPSSEKKVSKAPSTPVPPSPAPA  
PGLTKRVKSKQPLQVTKDLGRWKPADDLLINAVLQ  
TNDLTSVHLGVKFSRFTLREVQERWYALLYDPVISKL  
ACQAMRQLHPEAIAAIQSKALFSKAEQLLSKVGSTS  
QPTLETQDLLHRHPDAFYLARTAKALQAHWQLMKQ  
YYLLEDQTVQPLPKGDQVLNFSDAEDLIDDSKLDKMR  
DEVLEHELMVADRRQKREIRQLELHKWQVLVDSIT  
GMSSPDFDNQTLAVLRGRMVRYLMRSREITLGRATKD  
NQIDVDLSLEGPWKISRKQGVIKLKNNGDFFIANEG  
RRPIYIDGRPVLCGSKWRLSNNSVVEIASLRFVFLINQ  
DLIALIRAEAAKITPQ  
(1-462 aa encoded by BC011794)

## Reconstitution and Storage

**Reconstitution:**  
Reconstitute at 0.25 µg/µl in 200 µl sterile water for short-term storage.  
After reconstitution with sterile water, if glycerol has no effect on subsequent experiments, it is recommended to add an equal volume of glycerol for long-term storage (see Stability and Storage for more details).  
If a different concentration is needed for your purposes please adjust the reconstitution volume as required (please note: the ion concentration of the final solution will vary according to the volume used).  
Note: Centrifuge vial before opening. When reconstituting, gently pipet and wash down the sides of the vial to ensure full recovery of the protein into solution.

**Shipping:**  
The product is shipped at ambient temperature.  
Upon receipt, store it immediately at the recommended temperature (see below).

## Purity

60%, by SDS-PAGE with Coomassie Brilliant Blue staining.

## Formulation

The purified protein was Lyophilized from sterile PBS (58mM Na<sub>2</sub>HPO<sub>4</sub>, 17mM NaH<sub>2</sub>PO<sub>4</sub>, 68mM NaCl, pH8.). 5 % trehalose and 5 % mannitol are added as protectant before lyophilization. The elution buffer contain 100mM GSH.

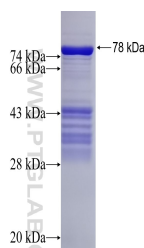
## Stability and Storage

Store for up to 12 months at -20°C to -80°C as lyophilized powder.

## Storage of Reconstituted Protein

**Short Term Storage:**  
Store at 2-8°C for (1-2 weeks).  
**Long Term Storage:**  
Aliquot and store at -20°C to -80°C for up to 3 months, reconstitution with sterile water and addition of an equal volume of glycerol. Avoid repeat freeze-thaw cycles.

## Selected Validation Data



For technical support and original validation data for this product please contact:  
T: 1 (888) 4PTGLAB (1-888-478-4522)  
(toll free in USA), or 1(312) 455-8498  
(outside USA)

E : [proteintech@ptglab.com](mailto:proteintech@ptglab.com) W:  
[ptglab.com](http://ptglab.com)

This product is exclusively available under Proteintech Group brand and is not available to purchase from any other manufacturer.