

FOR IN VITRO RESEARCH USE ONLY.
NOT FOR USE IN HUMANS OR ANIMALS.

Recombinant human SERCA2,ATP2A2 protein



Basic Information

Catalog Number:
Ag5052

Form:
Available lyophilized

Species:
human

Expression Source:
e coli-derived, T-HIS, with N-terminal 6⁺His.

Biological Activity:
Not tested

Endotoxin Level:
Please contact the lab for more information

Peptide Sequence:
ALGTRRMAKKNAIVRSLPSVETLGCTSVICSDKTGTLT
TNQMSVCRMFIIDRVEGDTCSLNEFTITGSTYAPIGE
VHKDDKPVNCHQYDGLVELATICALCNDSDLDYNEA
KGVYEKVGAEATETALTCLVEKMNVDTELKGLSKIERA
NACNSVIKQLMKKEFTLEFSRDRKSMVYCTPNKPSR
TSMKMFVKGAPEGVIDRCTHIRVGSTKVPMTSGVK
QKIMSVIREWGSGLTLCALATHDNPLRREEMHLE
DSANFIKYETNLTFVGCVGMLDPPRIEVASSVKLCRQ
AGIRVIMITGDNKGTAVAICRRIGIFGQDEDVTSKAF
T
GREFDELNPSAQRDACLNARCFARVEPSHKSKIIVEFL
QSFDEITAMT
(320-700 aa encoded by BC035588)

Reconstitution and Storage

Reconstitution:
Reconstitute at 0.25 µg/µl in 200 µl sterile water for short-term storage.
After reconstitution with sterile water, if glycerol has no effect on subsequent experiments, it is recommended to add an equal volume of glycerol for long-term storage (see Stability and Storage for more details).
If a different concentration is needed for your purposes please adjust the reconstitution volume as required (please note: the ion concentration of the final solution will vary according to the volume used).
Note: Centrifuge vial before opening. When reconstituting, gently pipet and wash down the sides of the vial to ensure full recovery of the protein into solution.

Shipping:
The product is shipped at ambient temperature.
Upon receipt, store it immediately at the recommended temperature (see below).

Purity

80%, by SDS-PAGE with Coomassie Brilliant Blue staining.

Formulation

The purified protein was Lyophilized from sterile PBS (58mM Na₂HPO₄, 17mM NaH₂PO₄, 68mM NaCl, pH7.4). 5 % trehalose and 5 % mannitol are added as protectant before lyophilization. The elution buffer contain 300mM imidazole.

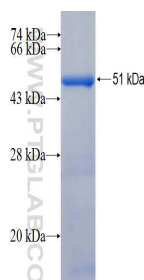
Stability and Storage

Store for up to 12 months at -20°C to -80°C as lyophilized powder.

Storage of Reconstituted Protein

Short Term Storage:
Store at 2-8°C for (1-2 weeks).
Long Term Storage:
Aliquot and store at -20°C to -80°C for up to 3 months, reconstitution with sterile water and addition of an equal volume of glycerol. Avoid repeat freeze-thaw cycles.

Selected Validation Data



For technical support and original validation data for this product please contact:
T: 1 (888) 4PTGLAB (1-888-478-4522)
(toll free in USA), or 1(312) 455-8498
(outside USA)
E: proteintech@ptglab.com W:
ptglab.com

This product is exclusively available under Proteintech Group brand and is not available to purchase from any other manufacturer.