

For Research Use Only

Biotin-conjugated IgG Lambda Light Chain Polyclonal antibody



Catalog Number: Biotin-11541

Basic Information

Catalog Number: Biotin-11541	GenBank Accession Number: BC020233	Purification Method: Antigen affinity purification
Size: 100ul , Concentration: 1000 µg/ml by Nanodrop;	GeneID (NCBI): 3535	Recommended Dilutions: IHC 1:50-1:500
Source: Rabbit	Full Name: immunoglobulin lambda locus	
Isotype: IgG	Calculated MW: 237 aa, 25 kDa	
Immunogen Catalog Number: AG2064	Observed MW: 25 kDa	

Applications

Tested Applications:

IHC

Species Specificity:

human

Note-IHC: suggested antigen retrieval with TE buffer pH 9.0; (*) Alternatively, antigen retrieval may be performed with citrate buffer pH 6.0

Positive Controls:

IHC : human tonsillitis tissue,

Background Information

This antibody detects the lambda light chain of human IgG.

Storage

Storage:

Store at -20°C. Avoid exposure to light.

Storage Buffer:

PBS with 50% Glycerol, 0.05% Proclin300, 0.5% BSA, pH 7.3.

Aliquoting is unnecessary for -20°C storage

***** 20ul sizes contain 0.1% BSA**

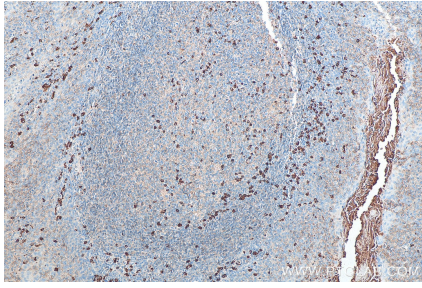
For technical support and original validation data for this product please contact:

T: 1 (888) 4PTGLAB (1-888-478-4522) (toll free in USA), or 1(312) 455-8498 (outside USA)

E: proteintech@ptglab.com
W: ptglab.com

This product is exclusively available under Proteintech Group brand and is not available to purchase from any other manufacturer.

Selected Validation Data



Immunohistochemical analysis of paraffin-embedded human tonsillitis tissue slide using Biotin-11541 (IgG Lambda Light Chain antibody) at dilution of 1:200 (under 10x lens). Heat mediated antigen retrieval with Tris-EDTA buffer (pH 9.0).