

For Research Use Only

Biotin Anti-Human CD11a (TS2/4) Mouse IgG2a Recombinant Antibody

Catalog Number: Biotin-65563



Basic Information

Catalog Number:

Biotin-65563

Size:

100ug , 500 µg/ml

Source:

Mouse

Isotype:

IgG2a

GenBank Accession Number:

BC008777

GeneID (NCBI):

3683

ENSEMBL Gene ID:

ENSG00000005844

UNIPROT ID:

P20701

Full Name:

integrin, alpha L (antigen CD11A
(p180), lymphocyte function-
associated antigen 1; alpha
polypeptide)

Calculated MW:

129 kDa

Purification Method:

Protein A purification

CloneNo.:

TS2/4

Applications

Tested Applications:

FC

Species Specificity:

human

Background Information

CD11a, also known as integrin αL or LFA-1α, is a 170-180 kDa transmembrane glycoprotein that forms a heterodimer with CD18 (PMID: 7027264; 1672643). CD11a/CD18 (LFA-1) is expressed by all leukocytes and mediates cell adhesion through interactions with its ligands, intercellular adhesion molecule 1 (ICAM-1), ICAM-2, and ICAM-3 (PMID: 7479767). CD11a/CD18 also functions in lymphocyte costimulatory signaling (PMID: 1972160).

Storage

Storage:

Store at 2-8°C. Avoid exposure to light. Stable for one year after shipment.

Storage Buffer:

PBS with 0.09% sodium azide.

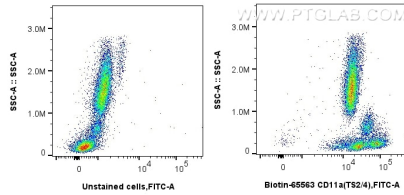
For technical support and original validation data for this product please contact:

T: 1 (888) 4PTGLAB (1-888-478-4522) (toll free
in USA), or 1(312) 455-8498 (outside USA)

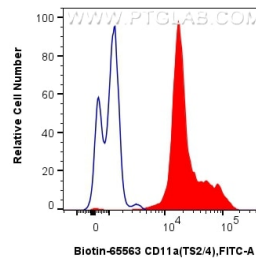
E: proteintech@ptglab.com
W: ptglab.com

This product is exclusively available under Proteintech Group brand and is not available to purchase from any other manufacturer.

Selected Validation Data



1x10⁶ human peripheral blood leukocytes were unstained or surface stained with 0.25 µg Biotin Anti-Human CD11a (TS2/4) Mouse IgG2a RecAb (Biotin-65563, Clone: TS2/4) and CoraLite®488-conjugated streptavidin. Cells were incubated with FC Receptor Block prior to staining. Cells were not fixed.



1x10⁶ human peripheral blood leukocytes were unstained (blue) or surface stained with 5 µl Biotin Anti-Human CD11a (TS2/4) Mouse IgG2a RecAb (Biotin-65563, Clone: TS2/4) and CoraLite®488-conjugated streptavidin (red). Cells were incubated with FC Receptor Block prior to staining. Cells were not fixed.