

For Research Use Only

FcZero-rAb® Biotin Anti-Human SLAM/CD150 Rabbit Recombinant Antibody

Catalog Number: Biotin-FcA98220



Basic Information

Catalog Number:

Biotin-FcA98220

Size:

100ug, 500 ug/ml

Source:

Rabbit

Isotype:

IgG

Immunogen Catalog Number:

EG1702

GenBank Accession Number:

NM_003037.5

GeneID (NCBI):

6504

UNIPROT ID:

Q13291-1

Full Name:

signaling lymphocytic activation
molecule family member 1

Calculated MW:

37kDa

Purification Method:

Protein A purification

CloneNo.:

241800B12

Recommended Dilutions:

FC: 0.25 ug per 10⁶ cells in a 100 µl
suspension

Applications

Tested Applications:

FC

Species Specificity:

human

Positive Controls:

FC : human PBMCs,

Background Information

Signaling lymphocytic activation molecule (SLAM, also known as SLAMF1 or CD150) is a 70-95 kDa transmembrane glycoprotein that belongs to the immunoglobulin gene superfamily. SLAM is constitutively expressed on peripheral blood memory T-cells, T-cell clones, immature thymocytes and a proportion of B-cells, and is rapidly induced on naive T-cells after activation. SLAM is involved in T cell stimulation and cytokine production, and may play an important role in the regulation of immune responses to pathogens.

Storage

Storage:

Store at 2-8°C. Avoid exposure to light. Stable for one year after shipment.

Storage Buffer:

PBS with 0.09% sodium azide, pH7.3

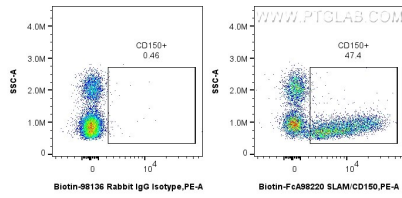
For technical support and original validation data for this product please contact:

T: 1 (888) 4PTGLAB (1-888-478-4522) (toll free
in USA), or 1(312) 455-8498 (outside USA)

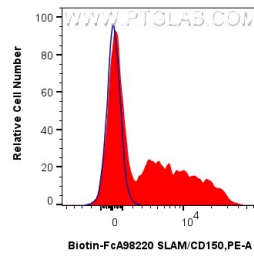
E: proteintech@ptglab.com
W: ptglab.com

This product is exclusively available under Proteintech Group brand and is not available to purchase from any other manufacturer.

Selected Validation Data



1x10⁶ human PBMCs were surface stained with 0.25 ug Biotin Anti-Human SLAM/CD150 Rabbit RecAb (Biotin-FcA98220, Clone: 241800B12) or Isotype Control, and CoraLite®488-Conjugated Goat Anti-Rabbit IgG(H+L) (SA00013-2). Cells were not fixed.



1x10⁶ human PBMCs were surface stained with 0.25 ug Biotin Anti-Human SLAM/CD150 Rabbit RecAb (Biotin-FcA98220, Clone: 241800B12) (red) or Isotype Control (blue), and CoraLite®488-Conjugated Goat Anti-Rabbit IgG(H+L) (SA00013-2). Cells were not fixed.