

For Research Use Only

CoraLite® Plus 405 Anti-Mouse CD107a / LAMP1 (1D4B)



Catalog Number: **CL405-65050**

Basic Information

Catalog Number:	GenBank Accession Number:	Purification Method:
CL405-65050	BC006785	Affinity purification
Size:	GeneID (NCBI):	CloneNo.:
100ug , 500 µg/ml	16783	1D4B
Source:	UNIPROT ID:	Excitation/Emission maxima wavelengths:
Rat	P11438	399 nm / 422 nm
Isotype:	Full Name:	
IgG2a, kappa	Lysosomal-associated membrane protein 1	

Applications

Tested Applications:
FC (Intra)
Species Specificity:
Mouse

Background Information

LAMP1 (CD107a) is a heavily glycosylated membrane protein enriched in the lysosomal membrane. LAMP1 is extensively glycosylated with asparagine-linked oligosaccharides which protect it from intracellular proteolysis (PMID: 10521503). Although LAMP1 is expressed largely in the endosome-lysosomal membrane of cells, it is also found on the plasma membrane (PMID: 16168398). Elevated LAMP1 expression at the cell surface has also been detected during platelet and granulocytic cell activation, as well as in some tumor cells (PMID: 29085473). LAMP1 functions to provide selectins with carbohydrate ligands. This protein has also been shown to be a marker of degranulation on lymphocytes such as CD8+ and NK cells and may also play a role in tumor cell differentiation and metastasis (PMID: 18835598; 29085473; 9426697).

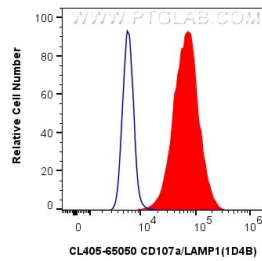
Storage

Storage:
Store at 2-8°C. Avoid exposure to light. Stable for one year after shipment.
Storage Buffer:
PBS with 0.09% sodium azide.

For technical support and original validation data for this product please contact:
T: 1 (888) 4PTGLAB (1-888-478-4522) (toll free in USA), or 1(312) 455-8498 (outside USA)
E: proteintech@ptglab.com
W: ptglab.com

This product is exclusively available under Proteintech Group brand and is not available to purchase from any other manufacturer.

Selected Validation Data



1x10⁶ NIH/3T3 cells were intracellularly stained with 0.5 ug CoraLite® Plus 405 Anti-Mouse CD107a / LAMP1 (CL405-65050, Clone: 1D4B) (red), or 0.5 ug CoraLite® Plus 405 Rat IgG2a Isotype Control (2A3) (CL405-65209, Clone: 2A3) (blue). Cells were fixed with 4% PFA and permeabilized with Flow Cytometry Perm Buffer (PF00011-C).