

For Research Use Only

CoraLite® Plus 405 Anti-Human CD107b / LAMP2 (H4B4)

Catalog Number: CL405-65053



Basic Information

Catalog Number:

CL405-65053

Size:

100 tests, 5 µl/test

Source:

Mouse

Isotype:

IgG1, kappa

GenBank Accession Number:

BC002965

GeneID (NCBI):

3920

ENSEMBL Gene ID:

ENSG00000005893

UNIPROT ID:

P13473

Full Name:

lysosomal-associated membrane protein 2

Calculated MW:

45 kDa

Purification Method:

Protein G purification

CloneNo.:

H4B4

Excitation/Emission maxima wavelengths:

399 nm / 422 nm

Applications

Tested Applications:

FC (Intra)

Species Specificity:

Human

Background Information

LAMP2 (CD107b) is a Lysosomal membrane glycoprotein. LAMP2 is extensively glycosylated with asparagine-linked oligosaccharides which protect it from intracellular proteolysis (PMID: 10521503). Although LAMP-2 is localized primarily in the endosome-lysosomal membrane of cells, it is also found on the plasma membrane under certain circumstances, e.g., after platelet activation, during granulocytic differentiation and activation, and in some tumor cells (PMID: 12221139). LAMP is involved in lysosomal stability and autophagy (PMID: 12221139). This glycoprotein provides selectins with carbohydrate ligands. LAMP2 may play a role in tumor cell metastasis (PMID 9426697).

Storage

Storage:

Store at 2-8°C. Avoid exposure to light. Stable for one year after shipment.

Storage Buffer:

PBS with 0.09% sodium azide and 0.5% BSA.

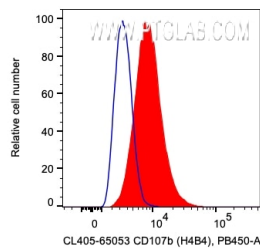
For technical support and original validation data for this product please contact:

T: 1 (888) 4PTGLAB (1-888-478-4522) (toll free in USA), or 1(312) 455-8498 (outside USA)

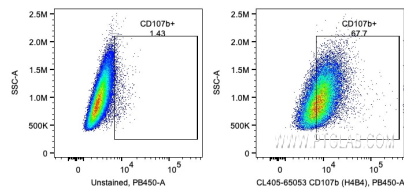
E: proteintech@ptglab.com
W: ptglab.com

This product is exclusively available under Proteintech Group brand and is not available to purchase from any other manufacturer.

Selected Validation Data



1X10⁶ HeLa cells were intracellularly stained with 5 ul CoraLite® Plus 405 Anti-Human CD107b / LAMP2 (CL405-65053, Clone:H4B4). Cells were fixed with 4% PFA and permeabilized with Flow Cytometry Perm Buffer (PF00011-C).



1X10⁶ HeLa cells were intracellularly stained with 5 ul CoraLite® Plus 405 Anti-Human CD107b / LAMP2 (CL405-65053, Clone:H4B4). Cells were fixed with 4% PFA and permeabilized with Flow Cytometry Perm Buffer (PF00011-C).