

For Research Use Only

CoraLite® Plus 405 Anti-Human CD45 (HI30)



Catalog Number: **CL405-65109**

Basic Information

Catalog Number: CL405-65109	GenBank Accession Number: BC014239	Purification Method: Affinity purification
Size: 100tests , 5 µl/test	GeneID (NCBI): 5788	CloneNo.: HI30
Source: Mouse	Full Name: protein tyrosine phosphatase, receptor type, C	Excitation/Emission maxima wavelengths: 399 nm / 422 nm
Isotype: IgG1, kappa		

Applications

Tested Applications:
FC

Species Specificity:
Human

Background Information

CD45, also known as protein tyrosine phosphatase, receptor type C, is a type I transmembrane protein expressed on the surface of all haematopoietic cells with the exception of erythrocytes and platelets (PMID: 3489673; 28615666). CD45 is a pan-haematopoietic cell marker and has been shown to be essential for T- and B-cell activation and signaling (PMID: 9429890; 16378097).

Storage

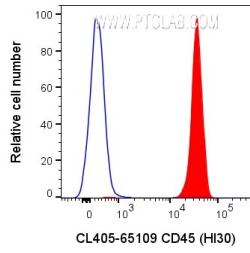
Storage:
Store at 2-8°C. Avoid exposure to light. Stable for one year after shipment.

Storage Buffer:
PBS with 0.09% sodium azide and 0.5% BSA.

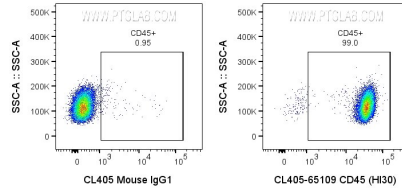
For technical support and original validation data for this product please contact:
T: 1 (888) 4PTGLAB (1-888-478-4522) (toll free in USA), or 1(312) 455-8498 (outside USA) E: proteintech@ptglab.com
W: ptglab.com

This product is exclusively available under Proteintech Group brand and is not available to purchase from any other manufacturer.

Selected Validation Data



1x10⁶ human PBMCs were surface stained with 5 ul CoraLite® Plus 405 Anti-Human CD45 (CL405-65109, Clone:HI30), or CoraLite® Plus 405 Mouse IgG1 Isotype Control. Cells were not fixed. Lymphocytes were gated.



1x10⁶ human PBMCs were surface stained with 5 ul CoraLite® Plus 405 Anti-Human CD45 (CL405-65109, Clone:HI30), or CoraLite® Plus 405 Mouse IgG1 Isotype Control. Cells were not fixed. Lymphocytes were gated.