

For Research Use Only

CoraLite® Plus 405 Anti-Human CD38 (HIT2)



Catalog Number: **CL405-65111**

Basic Information

Catalog Number: CL405-65111	GenBank Accession Number: BC007964	Purification Method: Affinity purification
Size: 100tests , 5 ul/test	GeneID (NCBI): 952	CloneNo.: HIT2
Source: Mouse	Full Name: CD38 molecule	Excitation/Emission maxima wavelengths: 399 nm / 422 nm
Isotype: IgG1, kappa	Calculated MW: 300 aa, 34 kDa	

Applications

Tested Applications:
FC

Species Specificity:
Human

Background Information

CD38, also known as ADP-ribosyl cyclase 1, is a type II transmembrane glycoprotein with a short N-terminal cytoplasmic tail, a single membrane-spanning domain, and a C-terminal extracellular region with four N-glycosylation sites (PMID: 2319135). The extracellular domain of CD38 has bifunctional enzyme activities that catalyze synthesis of cyclic ADP ribose from nicotinamide adenine dinucleotide (NAD) and hydrolysis of cyclic ADP ribose to adenosine diphosphoribose (PMID: 10636863). CD38 is expressed on a variety of hematopoietic and non-hematopoietic cells and is involved in diverse processes such as generation of calcium-mobilizing metabolites, cell activation, and chemotaxis (PMID: 25938500).

Storage

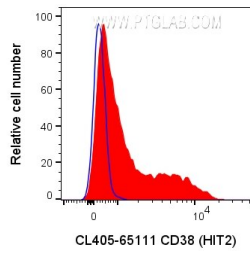
Storage:
Store at 2-8°C. Avoid exposure to light. Stable for one year after shipment.

Storage Buffer:
PBS with 0.09% sodium azide.

For technical support and original validation data for this product please contact:
T: 1 (888) 4PTGLAB (1-888-478-4522) (toll free in USA), or 1(312) 455-8498 (outside USA) E: proteintech@ptglab.com
W: ptglab.com

This product is exclusively available under Proteintech Group brand and is not available to purchase from any other manufacturer.

Selected Validation Data



1X10⁶ human PBMCs were surface stained with 5 ul CoraLite® Plus 405 Anti-Human CD38 (CL405-65111, Clone:HIT2), or CL405 Mouse IgG1 Isotype Control. Cells were not fixed. Lymphocytes were gated.