

For Research Use Only

CoraLite® Plus 405 Anti-Human CD8a (Hit8a)



Catalog Number: **CL405-65113**

Basic Information

Catalog Number:

CL405-65113

Size:

100 tests, 5 µl/test

Source:

Mouse

Isotype:

IgG1, kappa

GenBank Accession Number:

BC025715

GeneID (NCBI):

925

ENSEMBL Gene ID:

ENSG00000153563

UNIPROT ID:

P01732

Full Name:

CD8a molecule

Calculated MW:

235 aa, 26 kDa

Purification Method:

Affinity purification

CloneNo.:

Hit8a

Excitation/Emission maxima wavelengths:

399 nm / 422 nm

Applications

Tested Applications:

FC

Species Specificity:

Human

Background Information

CD8 is a transmembrane glycoprotein composed of two disulfide-linked chains. It can be present as a homodimer of CD8α or as a heterodimer of CD8α and CD8β (PMID: 3264320; 8253791). CD8 is found on most thymocytes. The majority of class I-restricted T cells express mostly the CD8αβ heterodimer while CD8αα homodimers alone have been found on some gut intraepithelial T cells, on some T cell receptor (TCR) γδ T cells and on NK cells (PMID: 2111591; 1831127; 8420975). CD8 acts as a co-receptor that binds to MHC class-I and participates in cytotoxic T cell activation (PMID: 8499079). During T cell development, CD8 is required for positive selection of CD4-/CD8+ T cells (PMID: 1968084).

Storage

Storage:

Store at 2-8°C. Avoid exposure to light. Stable for one year after shipment.

Storage Buffer:

PBS with 0.09% sodium azide and 0.5% BSA.

For technical support and original validation data for this product please contact:

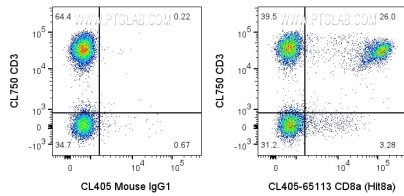
T: 1 (888) 4PTGLAB (1-888-478-4522) (toll free in USA), or 1(312) 455-8498 (outside USA)

E: proteintech@ptglab.com

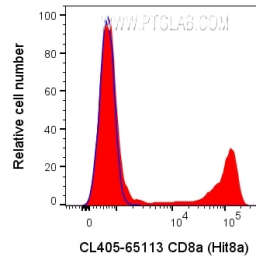
W: ptglab.com

This product is exclusively available under Proteintech Group brand and is not available to purchase from any other manufacturer.

Selected Validation Data



1x10⁶ human PBMCs were surface stained with CL750 Anti-Human CD3 and 5 ul CoraLite® Plus 405 Anti-Human CD8a (CL405-65113, Clone:Hit8a), or CoraLite® Plus 405 Mouse IgG1 Isotype Control. Cells were not fixed. Lymphocytes were gated.



1x10⁶ human PBMCs were surface stained with 5 ul CoraLite® Plus 405 Anti-Human CD8a (CL405-65113, Clone:Hit8a), or CoraLite® Plus 405 Mouse IgG1 Isotype Control. Cells were not fixed. Lymphocytes were gated.