

For Research Use Only

# CoraLite® Plus 405 Mouse IgG1 Isotype Control (MOPC-21)



Catalog Number: **CL405-65124**

## Basic Information

<b>Catalog Number:</b> CL405-65124	<b>GenBank Accession Number:</b> GeneID (NCBI): 16017	<b>Purification Method:</b> Affinity purification
<b>Size:</b> 100ug, 0.2 mg/ml	<b>Full Name:</b> immunoglobulin heavy constant gamma 1 (G1m marker)	<b>CloneNo.:</b> MOPC-21
<b>Source:</b> Mouse		<b>Excitation/Emission maxima wavelengths:</b> 399 nm / 422 nm
<b>Isotype:</b> IgG1		

## Applications

**Tested Applications:**  
FC  
**Species Specificity:**

## Background Information

The MOPC-21 immunoglobulin is useful as an isotype-matched control. The MOPC-21 immunoglobulin has an unknown binding specificity and is used as an isotype control for mouse IgG1 antibodies. This antibody has been quality-tested for flow cytometry as negative control.

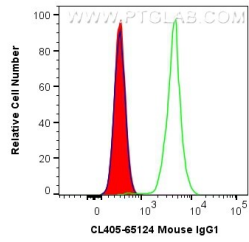
## Storage

**Storage:**  
Store at 2-8°C. Avoid exposure to light. Stable for one year after shipment.  
**Storage Buffer:**  
PBS with 0.09% sodium azide.

For technical support and original validation data for this product please contact:  
T: 1 (888) 4PTGLAB (1-888-478-4522) (toll free in USA), or 1(312) 455-8498 (outside USA)      E: [proteintech@ptglab.com](mailto:proteintech@ptglab.com)  
W: [ptglab.com](http://ptglab.com)

**This product is exclusively available under Proteintech Group brand and is not available to purchase from any other manufacturer.**

## Selected Validation Data



1X10<sup>6</sup> rat splenocytes cells were surface stained with 0.5 ug CoraLite® Plus 405 Mouse IgG1 Isotype Control (CL405-65124, Clone:MOPC-21) (red), or 0.5 ug CoraLite® Plus 405 Anti-Rat CD45 (green) or unstained (blue). Cells were not fixed.